

# In Silico Study of the Potential of Endemic Sumatra Wild Turmeric Rhizomes (*Curcuma Sumatrana*: Zingiberaceae) As Anti-Cancer

Aldi Tamara Rahman<sup>1</sup>, Rafia<sup>1</sup>, Aiken Jethro<sup>2</sup>, Putra Santoso<sup>1</sup>, Viol Dhea Kharisma<sup>3,4</sup>, Ahmad Affan Ali Murtadlo<sup>4</sup>, Devi Purnamasari<sup>5</sup>, Nunuk Hariani Soekanto<sup>6</sup>, ANM Ansori<sup>7</sup>, Kuswati<sup>8</sup>, Riso Sari Mandeli<sup>9</sup>, Kawther Ameen Muhammed Saeed Aledresi<sup>10</sup>, Nur Farhana Mohd Yusof<sup>11</sup>, Vikash Jakhmola<sup>12</sup>, Maksim Rebezov<sup>13,14,15</sup>, Rahadian Zainul<sup>16,17,\*</sup>, Kiran Dobhal<sup>12</sup>, Tarun Parashar<sup>12</sup>, Muhammad Arya Ghifari<sup>18</sup>, Deffi Ayu Puspito Sari<sup>19</sup>

<sup>1</sup>Department of Biology, Faculty of Mathematics and Natural Sciences, Andalas University, Padang, INDONESIA.

<sup>2</sup>Department of Medicine, Faculty of Medicine, Andalas University, Padang, INDONESIA.

<sup>3</sup>Department of Biology, Faculty of Science and Technology, Universitas Airlangga, Surabaya, INDONESIA.

<sup>4</sup>Division of Molecular Biology and Genetics, Generasi Biology Indonesia Foundation, Gresik, INDONESIA.

<sup>5</sup>Department of Radiology Engineering, Universitas Awal Bros, Pekanbaru, INDONESIA.

<sup>6</sup>Chemistry Department, Faculty of Mathematics and Natural Science, Hasanuddin University, INDONESIA.

<sup>7</sup>Professor Nidom Foundation, Surabaya, INDONESIA.

<sup>8</sup>Biology Education Study Program, Faculty of Teacher Training and Education, Jember University, INDONESIA.

<sup>9</sup>Environmental Science, Postgraduate Programme, Universitas Negeri Padang, Padang, INDONESIA.

<sup>10</sup>Biochemistry Department, Hawler Medical University, Erbil, Arbil Governorate, Iraqi Kurdistan, IRAQ.

<sup>11</sup>College of Engineering (Chemical), Universiti Teknologi MARA (UiTM), Jalan Purnama, Bandar Seri Alam, Masai, Johor, MALAYSIA.

<sup>12</sup>Uttaranchal Institute of Pharmaceutical Sciences, Uttaranchal University, Dehradun, INDIA.

<sup>13</sup>Department of Scientific Research, V. M. Gorbatov Federal Research Center for Food Systems, Moscow, RUSSIAN FEDERATION.

<sup>14</sup>Faculty of Biotechnology and Food Engineering, Ural State Agrarian University, Yekaterinburg, RUSSIAN FEDERATION.

<sup>15</sup>Department of Scientific Research, Russian State Agrarian University, Moscow, RUSSIAN FEDERATION.

<sup>16</sup>Center for Advanced Material Processing, Artificial Intelligence, and Biophysic Informatics (CAMP-BIOTICS), Universitas Negeri Padang, Padang, INDONESIA.

<sup>17</sup>Department of Chemistry, Faculty of Mathematics and Natural Sciences Universitas Negeri Padang, Padang, INDONESIA.

<sup>18</sup>Department of Informatics Engineering, Faculty of Computer Sciences, Universitas Brawijaya, Malang, INDONESIA.

<sup>19</sup>Environmental Engineering Program Study, Faculty of Engineering and Computer Sciences, Universitas Bakrie, Jakarta, INDONESIA.

## Correspondence

Rahadian Zainul

Center for Advanced Material Processing, Artificial Intelligence, and Biophysic Informatics (CAMP-BIOTICS), Department of Chemistry, Faculty of Mathematics and Natural Sciences Universitas Negeri Padang, Padang, INDONESIA.

E-mail: rahadianzmsiphd@fmipa.unp.ac.id

## History

- Submission Date: 10-10-2022;
- Review completed: 16-11-2022;
- Accepted Date: 05-12-2022.

DOI : 10.5530/pj.2022.14.171

Article Available online

http://www.phcogj.com/v14/i6

## Copyright

© 2022 Phcogj.Com. This is an open-access article distributed under the terms of the Creative Commons Attribution 4.0 International license.

## ABSTRACT

Cancer is one of the diseases that is the highest cause of death in humans. Most human cancer cells are formed as a result of over-expression of anti-apoptotic proteins. Thus, the activation of these proteins can inhibit pro-apoptotic proteins, then apoptosis will be inhibited so that other apoptotic pathways need to be activated to prevent cancer cells from developing. Current cancer treatments, such as chemotherapy using synthetic compounds, have various side effects, so research on natural based therapies can be used as an alternative in cancer treatment. *Curcuma sumatrana* is one of the plants of the Zingiberaceae family which is an endemic plant from Sumatra which is found along the Bukit Barisan. The research was carried out in silico by analyzing the potential bioactivity of the compounds, testing the bioavailability, toxicity, and molecular docking of the bioactive compounds from the ethanol extract of the rhizome of *C. sumatrana* which had been previously identified through gas chromatography-mass spectroscopy (GC-MS) analysis. The results obtained that the compound 9-Acetyl-S-octahydrophenanthrene and 3-Oxo-androsta-1,4-dien-17.βeta.-spiro-2'-3'-oxo-oxetane contained in *C. sumatrana* has the potential to be developed as an anticancer where the compound has good bioavailability value and is not toxic and potentially can trigger apoptosis. However, the results of this study need to be analyzed further with an *in vitro* or *in vivo* approach.

**Key words:** Anticancer, *C. sumatrana*, *In silico*.

## INTRODUCTION

Cancer is a very complex disease and is ranked first as the most common cause of death worldwide.<sup>1</sup> In poor and developing countries, the increase in the incidence of cancer is in line with the increase in the prevalence of risk factors such as smoking, overweight, physical inactivity, and patterns of reproductive changes associated with urbanization and economic growth.<sup>2</sup> Cancer has become a major health burden for society because the main treatment for cancer requires surgery, chemotherapy, radiation therapy and immunotherapy which are expensive and high risk. In addition, the side effects of cancer drugs and irradiation are still a threat to cancer patients, while not all cancer patients can be cured by surgery. Therefore, it is necessary to explore alternative solutions that are effective, economical and have low side effects in suppressing cancer cases. Cancer chemoprevention is the latest rapidly developing approach using natural or synthetic agents to prevent, inhibit or reverse tumorigenesis and suppress the development of invasive cancer.<sup>3</sup> Considering the high diversity and potential sources of raw materials for Indonesian natural medicines, the exploration and development of medicinal materials made from natural medicines for cancer is a strategic and urgent step.

Previous reports stated that the rhizomes of plants in the genus *Curcuma* contain a variety of potential secondary metabolites as anticancer, especially the saponins, alkaloids, flavonoids, tannins and curcuminoids.<sup>4</sup> So far, the study of the medical

properties of turmeric rhizome has only focused on cultivated turmeric species such as turmeric from *Curcuma domestica* and *C. longa* species.<sup>5</sup>

A recent study proved that the ethanol extract of *C. sumatrana* rhizome was effective in preventing brain degeneration, decreased cognitive function and accumulation of free radicals in mice induced with high doses of monosodium glutamate.<sup>6</sup> This efficacy is strongly suspected to be related to the content of various bioactive compounds in the rhizome of *C. sumatrana* which is dominated by the sesquiterpenoid group. In order to develop the potential of bioactive compounds in *C. sumatrana* rhizome as anticancer natural medicinal materials, extensive and in-depth studies with various approaches are needed.

Apoptosis is the most successful non-surgical therapy, targeting apoptosis effectively for all types of cancer.<sup>7</sup> The one way to trigger apoptosis is by extrinsic pathway, namely ligand binding and through activation of death domain receptor families, such as FAS and TNF-associated apoptosis-inducing ligand (TRAIL).<sup>8-10</sup> The TRAIL receptors used were TRAIL-R1 DR-4 and TRAIL-R2 (APO-2, DR-5). This will allow activation of caspase-8 or -10 by generating a death-inducing signaling complex (DISC).<sup>11</sup>

Cancer cells are more easily triggered to carry out apoptosis than normal cells.<sup>12</sup> This can be attributed to the increased sensitivity of cancer cells to apoptosis caused by environmental stress or hypoxia.<sup>13</sup> In addition, tumor/cancer cells are also more sensitive when apoptosis is triggered through

**Cite this article:** Rahman AT, Rafia, Jethro A, Santoso P, Kharisma VD, Murtadlo AAA, et al. *In Silico* Study of the Potential of Endemic Sumatra Wild Turmeric Rhizomes (*Curcuma Sumatrana*: Zingiberaceae) As Anti-Cancer. *Pharmacogn J.* 2022;14(6): 806-812.

the extrinsic pathway so that this pathway can be used as a therapeutic target in cancer cells.<sup>14</sup>

Exploration of potential anticancer drug materials can be carried out independently *in vivo* with test animals and *in vitro* with specific cell or tissue cultures. However, these classical approaches are expensive and time consuming. In addition, determining the specific target of a bioactive compound from medicinal herbs in intervening signaling systems related to the initiation and development of cancer *in vitro* and *in vivo* requires a very complex experimental stage. Therefore, it is necessary to do an alternative approach that is fast, specific and economical, namely through *in silico* studies. *In silico* investigation of the anticancer potential of compounds from *C. sumatrana* is very possible because data on the secondary metabolites contained therein are available (although these are only a group of volatile compounds and low molecular weight).

## MATERIALS AND METHODS

### Sample retrieval

Data on bioactive compounds of *C. sumatrana* rhizome ethanol extract (with GC-MS test) were isolated from PubChem (<https://pubchem.ncbi.nlm.nih.gov/>) in \*.sdf format, 3D structure protein taken from the Protein Data Bank (PDB) is FAS/CD95 (PDB ID:3EZQ) with a resolution of 2.73Å, TRAIL protein is death receptor 4/DR-4 (PDB ID:1DG6) with a resolution of 1.30Å and death receptor 5/DR-5 (PDB ID:1D4V) with 2.20Å. resolution in \*.pdb format.

### Bioactivity probability analysis

Prediction of the bioactivity of metabolites in *C. sumatrana* was carried out by entering SMILE (simplified molecular-input line entry system) canonical data into the PASS web server (<http://www.way2drug.com/passonline/>). The value of Probability activity (Pa) which represents the target protein and the predicted compound, the value of Pa must be greater than the value of Pi (Probability inhibition). Pa value >0.3 (medium confidence) indicates a computationally proven result and further analysis is needed.<sup>14,22,23</sup>

### Bioavailability analysis

Bioavailability prediction is carried out to determine the permeability and solubility of a compound in the body. Bioavailability prediction based on lipinski rule of control ligand using SCFBio web server (<http://www.scfbio-iitd.res.in/software/drugdesign/lipinski.jsp>). Lipinski rules include molecular weights, hydrogen bond donors, hydrogen bond acceptors, log P and molar refractivity. Ligands that have passed the Lipinski rule are then determined for their toxicity potential.

### Toxicity analysis

Analysis of the safety level of the compound was carried out using the pkCSM (<https://biosig.lab.uq.edu.au/pkcsm/>) web server. Ligands that had passed Lipinski's rules were then determined for their potential toxicity. Parameters analyzed included carcinogenicity (AMES), acute oral toxicity (LD50), and Human Ether A-Go-Go Related Gene (hERG), and Minnow test. The test was carried out by entering SMILES ligand data into the pkCSM web server (<http://biosig.unimelb.edu.au/pkcsm/>).

### Analysis of ligand potential with molecular docking

This analysis was carried out through specific steps in the form of preparation of the test ligand, receptor, and molecular docking. Phytochemical data from *C. sumatrana* then inputted into the Pubchem database and isolated as a ligand in \*.sdf format. Furthermore, ligand minimization was carried out using PyRx 0.8 software. Isolated proteins FAS/CD95, DR-4, and DR-5 (a protein involved in the

apoptotic pathway of cancer cells) from the Protein Data Bank (PDB) as receptors. Protein model that has missing residue is completed by using Moddlop web server. Preparation by removing water molecules and minimizing energy using Yasara Dynamic and Chimera. Receptor proteins are stored in \*.pdb format. After that predicted the binding site of the protein using the P2rank web server (<https://prankweb.cz/>). The simulation of protein and ligand binding used molecular docking using PyRx 0.8 software. Visualization of interactions between proteins and ligands was visualized using Biovia Discovery Studio and PyMol.<sup>24-26</sup>

## RESULTS AND DISCUSSION

GC-MS data namely 22 compound successfully identified (Appendix 1) and obtained 12 compounds that are predicted to stimulate caspase-8. Data from bioactivity analysis are presented in Figure 1. The prediction results of compound bioactivity using the PASS web server indicated that 12 compounds in the rhizome of *C. sumatrana* had a high level of activation probability with a value of Pa>0.3, indicating that the prediction results were computationally proven.<sup>16</sup> These compounds have been computationally proven to have the potential to stimulate caspase-8, which is one of the important pathways in cancer inhibition. The activity potential inhibition (Pi) value for the 12 compounds was lower than the Pa value, this indicated that there would be no inhibition in caspase-8 stimulation if these compounds entered the human body.<sup>17,18,27</sup>

From the results of the bioactivity prediction analysis, it was found that 12 compounds were predicted to stimulate caspase-8 (Table 1). Predictions made with the Lipinski server showed that the metabolites (as ligands in this study) in the rhizome of *C. sumatrana* complied with Lipinski's rules, namely molecular weight (MW) < 500 Daltons, lipophilicity (LogP) < 5, hydrogen donor bond (HBD) <10, and molar refractivity (MR) 40-130.<sup>19</sup> These compounds are predicted to have good absorptivity and can trigger biological responses when interacting with target proteins.

The results of the toxicity prediction analysis that have been carried out are presented (Table 2). Ligand toxicity based on AMES mutagenic parameters indicates the potential of chemicals that cause mutations in the DNA structure, while hERG 2 inhibitors show potential chemical inhibitors against human ether-a-go-go-related gene receptors, and Oral Rat Acute Toxicity (LD50) represents the dose. the lowest level of a substance under certain conditions that can kill 50% of the exposed test sample. While hepatotoxicity represents the level of liver damage due to exposure to chemicals, and the Minnow test represents the level of toxicity of chemicals in a solution.<sup>20,28,29</sup>

The results of the predictive toxicity analysis found that most of the secondary metabolites in the rhizome of *C. sumatrana* were non-toxic (safe). However, there is one compound, namely boldenone which is predicted to be toxic which can specifically elicit an inhibitory effect on the hERG 2 receptor. Thus, boldenone does not meet the criteria for further analysis regarding its anticancer potential.

The proteins that are used as ligand targets in the analysis are the main proteins that play a role in the apoptosis signaling system in cancer cells, namely FAS/CD95 protein, DR-4 protein, and DR-5. The binding affinity values for each ligand and protein are presented in Table 3.

The results of molecular docking between the ligand and FAS/CD95 protein showed that the compound 9-Acetyl-S-octahydrophenanthrene had the lowest binding affinity value of -9.3 kcal/mol. The interactions between ligands and proteins are hydrogen bonds (Gln E:311), hydrogen pi-donor bonds (Gln G:311, Gln A:311), alkyl bonds (Ala G:307, Ile E:310, Ile G:310, Ala E:307, Leu A:315, Ala C:307, Ile G:314, Leu G:315), and the van der Waals bond (Ile E:314, Gln C:311, Ala A:307, Ile A:314) (Figure 1). The results of molecular docking between the ligand and DR-5 protein also showed that the compound 3-Oxo-

**Table 1: Bioavailability analysis based on Lipinski's rule.**

Compounds (Ligands)	Criteria Based on Lipinski's Rule				
	MW (Dalton)	LogP (<5)	Hydrogen Donor (<5)	Hydrogen Acceptor (<10)	Molar Refractivity (40-130)
α-selinene	204	4.72	0	0	66.74
Curzerene	216	3.84	0	1	66.52
α-Gujajene	204	4.72	0	0	66.74
Cycloisolongifolene, 8,9-dehydro-9-formyl	230	3.59	0	1	67.4
Boldenone	286	3.65	1	2	82.62
Spathulenol	220	3.38	1	1	65.97
Viridiflorol	222	3.46	1	1	65.99
(3E,7E)-10-prop-1-en-2-ylcyclodeca-3,7-dien-1-one	190	3.43	0	1	60.05
3-Oxo-androsta-1,4-dien-17.beta.-spiro-2'-3'-oxo-oxetane	326	3.26	0	3	98.15
Isovelleral	232	2.77	0	2	65.36
9-Acetyl-S-octahydrophenanthrene	228	3.64	0	1	69.73
5,6-Azulenodimethanol,1,2,3,3a,8,8a-hexahydro-2,2,8-trimethyl-,(3a.alpha.,8.beta.,8a.alpha.)-	236	2.52	2	2	69.5
Methyl 2-[2,4a-epidioxy-3,4,5,6,7,8-hexahydro-5,5,8a-trimethyl-2H-	284	2.72	0	5	70.62

**Table 2: Toxicity analysis secondary metabolite *Curcuma sumatrana* rhizome.**

Compounds (Ligan)	Toxicity Criteria				
	AMES Toxicity	hERG 2 Inhibitor	Oral Rat Acute Toxicity (LD50) (mol/kg)	Hepatotoxicity	Minnow Toxicity (Log Mm)
α-selinene	No	No	1.543	No	0.353
Curzerene	No	No	1.836	No	-0.194
α-Gujajene	No	No	1.679	No	0.366
Cycloisolongifolene, 8,9-dehydro-9-formyl	No	No	1.753	No	0.707
<b>Boldenone</b>	No	<b>Yes</b>	2.118	No	0.635
Spathulenol	No	No	1.687	No	1.266
Viridiflorol	No	No	1.615	No	1.063
(3E,7E)-10-prop-1-en-2-ylcyclodeca-3,7-dien-1-one	No	No	1.815	No	1.397
3-Oxo-androsta-1,4-dien-17.beta.-spiro-2'-3'-oxo-oxetane	No	No	1.848	No	0.279
Isovelleral	No	No	1.694	No	0.857
9-Acetyl-S-octahydrophenanthrene	No	No	1.998	No	0.109
5,6-Azulenodimethanol,1,2,3,3a,8,8a-hexahydro-2,2,8-trimethyl-,(3a.alpha.,8.beta.,8a.alpha.)-	No	No	1.464	No	1.318
Methyl 2-[2,4a-epidioxy-3,4,5,6,7,8-hexahydro-5,5,8a-trimethyl-2H-	No	No	2.584	No	1.209

**Table 3: Potential anticancer ligands based on molecular docking analysis.**

Senyawa (ligan)	Binding Affinity (Kcal/mol)		
	Protein FAS/CD95	Protein DR-5	Protein DR-4
α-selinene	-5,6	-5,1	-5,4
Curzerene	-3,6	-5,0	-4,9
α-gujajene	-4,2	-5,5	-5,5
Cycloisolongifolene, 8,9-dehydro-9-formyl	-0,6	-5,6	-5,5
Spathulenol	-3,5	-5,3	-5,1
Viridiflorol	-5,3	-5,4	-4,9
(3E,7E)-10-prop-1-en-2-ylcyclodeca-3,7-dien-1-one	-5,3	-4,8	-4,8
3-Oxo-androsta-1,4-dien-17.beta.-spiro-2'-3'-oxo-oxetane	-5,3	<b>-7,0</b>	<b>-7,1</b>
Isovelleral	-5	-5,4	-5,2
9-Acetyl-S-octahydrophenanthrene	<b>-9,3</b>	-6,2	-6,1
5,6-Azulenodimethanol,1,2,3,3a,8,8a-hexahydro-2,2,8-trimethyl-,(3a.alpha.,8.beta.,8a.alpha.)-	-5	-5,6	-5,4
Methyl 2-[2,4a-epidioxy-3,4,5,6,7,8-hexahydro-5,5,8a-trimethyl-2H-	-5	-5,4	-5,4

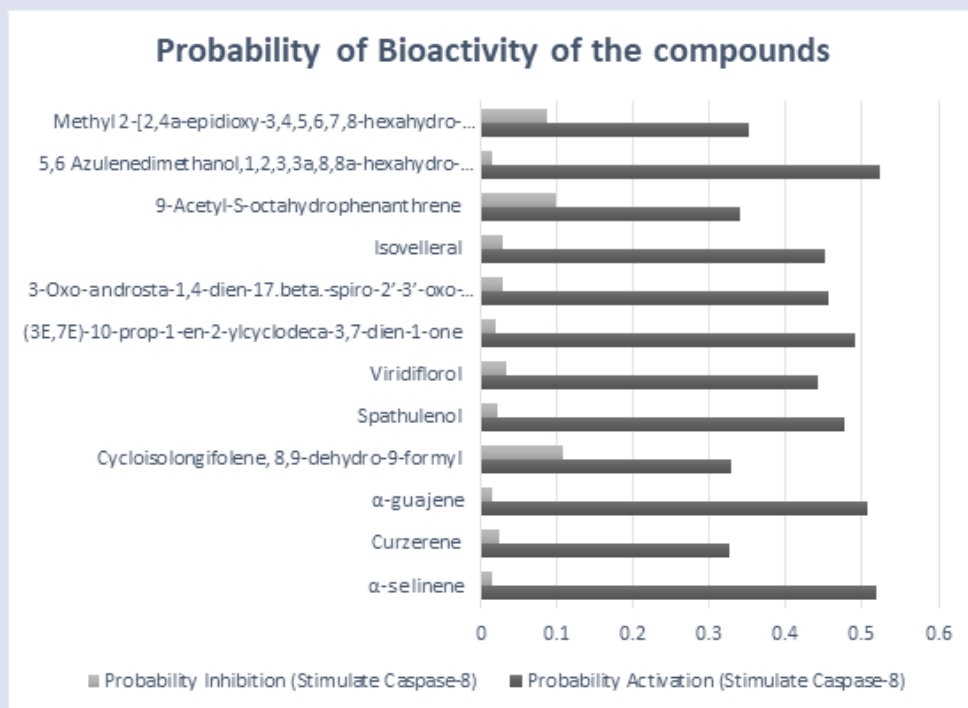


Figure 1: Probability of bioactivity from the rhizome *Curcuma sumatrana*.

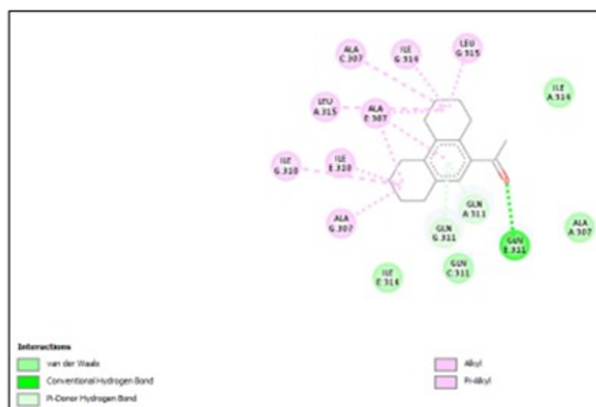
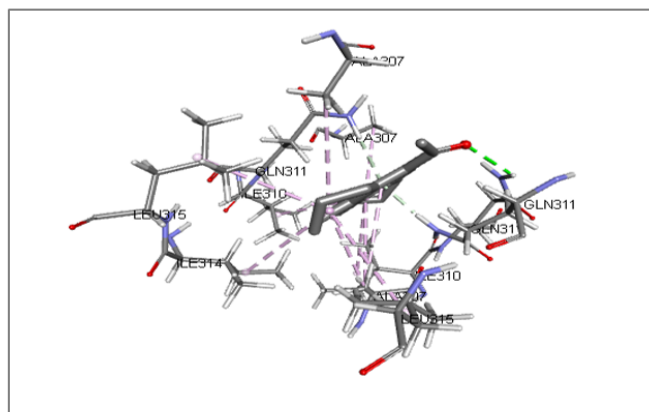


Figure 2: Visualization of the interaction between 9-Acetyl-S-octahydrophenanthrene compound and FAS/CD95 protein.

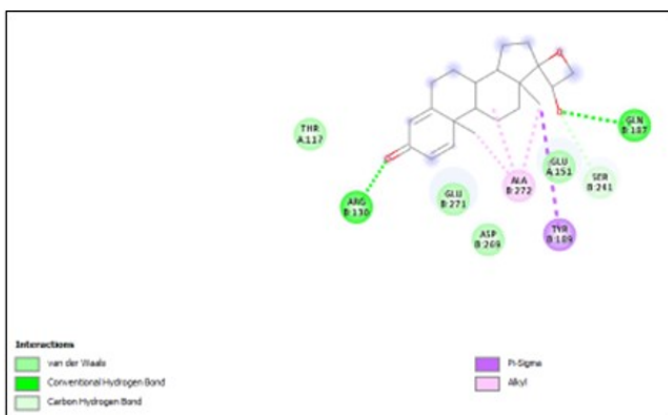
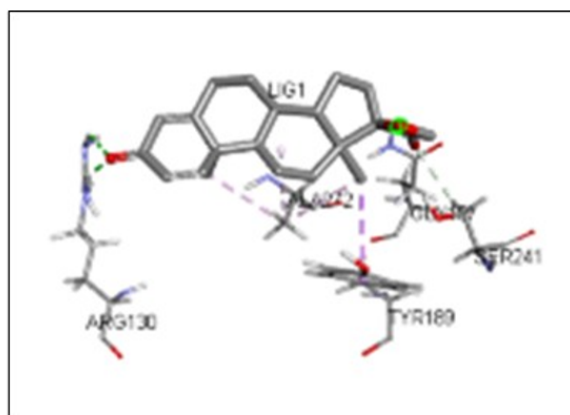
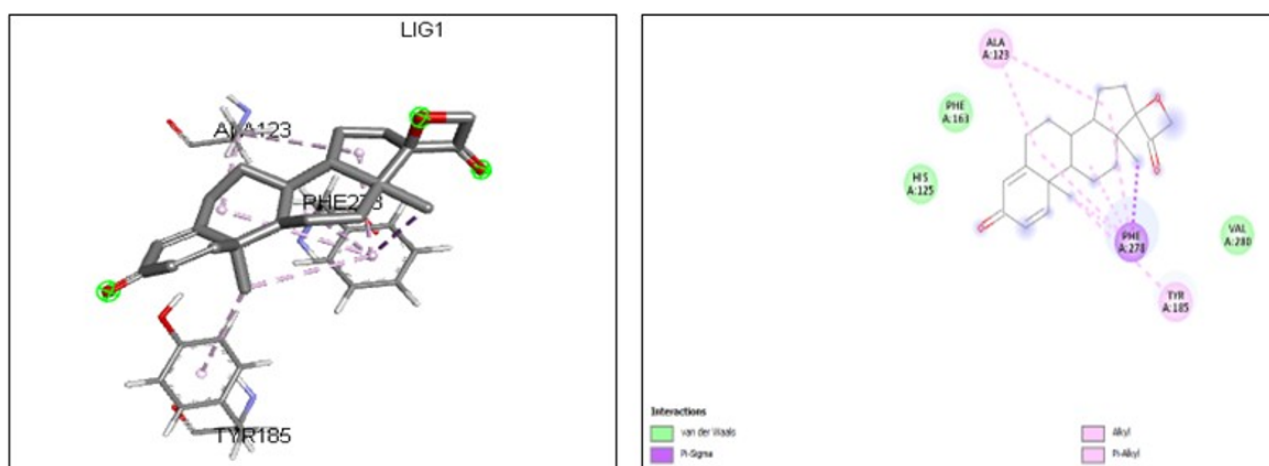


Figure 3: Visualization of interaction between 3-Oxo-androsta-1,4-dien-17.beta.-spiro-2'-3'-oxo-oxetane compound and DR-5 protein.





**Figure 4:** Visualization of the interaction between 3-Oxo-androsta-1,4-dien-17.beta.-spiro-2'-3'-oxo-oxetane compound and DR-4 protein.

androsta-1,4-dien-17.beta.-spiro-2'-3'-oxo-oxetane had the lowest binding affinity value  $-7.0$  kcal/mol with interactions between ligands and proteins in the form of hydrogen bonds (Arg B:130, Gln B:187), pi-sigma bonds (Tyr B:189), alkyl bonds (Ala B:272), hydrogen-carbon (Ser B:241), and van der Waals bonds (Thr A:117, Glu A:151, Glu B:271, Asp B:269) (Figure 2). While the results of molecular docking between the ligand and DR-4 protein showed that the compound 3-Oxo-androsta-1,4-dien-17.beta.-spiro-2'-3'-oxo-oxetane had the lowest binding affinity value, namely  $-7.1$  kcal/mol. The interactions between ligands and proteins are in the form of pi-sigma bonds (Phe A:278), alkyl bonds (Ala A:123, Tyr A:185), and van der Waals bonds (Phe A:163, His A:125, Val A:280) (Figure 3).

Binding affinity refers to the binding energy formed when one molecule interacts with another molecule. Thus it can produce a number of affinities that affect the activity of the target molecule.<sup>21,16,30</sup> Molecular complexes can be formed from weak bond interactions, hydrogen bond interactions have an important role in drug molecules, which play a role in maintaining molecular complexes so that they can trigger biological responses to protein targets.<sup>16,31,32</sup>

## CONCLUSION

From the results of an *in silico* study on the potential of secondary metabolites in the rhizome of wild turmeric endemic to Sumatra (*C. sumatrana*) as anticancer, the following conclusions can be drawn:

There are 12 compounds in the rhizome of *C. sumatrana* which have potential bioactivity in stimulating caspase-8 (an enzyme involved in the apoptotic pathway/programmed death of cancer cells).

The compounds in the rhizome of *C. sumatrana* have good bioavailability according to the Lipinski rule criteria so that they are predicted to have high absorbivity and trigger a biological response when interacting with target proteins in body tissues.

Most of the compounds in the rhizome of *C. sumatrana* that have bioactivity in stimulating caspase-8 are non-toxic except for boldenone which is predicted to have an inhibitory effect on the hERG 2 receptor.

Compound 9-Acetyl-S-octahydrophenanthrene and 3-Oxo-androsta-1,4-dien-17.beta.-spiro-2'-3'-oxo-oxetane in the rhizome of *C. sumatrana* are the main candidates as anticancer with good binding affinity. strong against specific proteins (FAS/CD95, DR-5 and DR-4) proteins involved in the apoptotic pathway of cancer cells.

## DISCLOSURE STATEMENT

The authors have no conflicts of interest to declare.

## ACKNOWLEDGEMENT

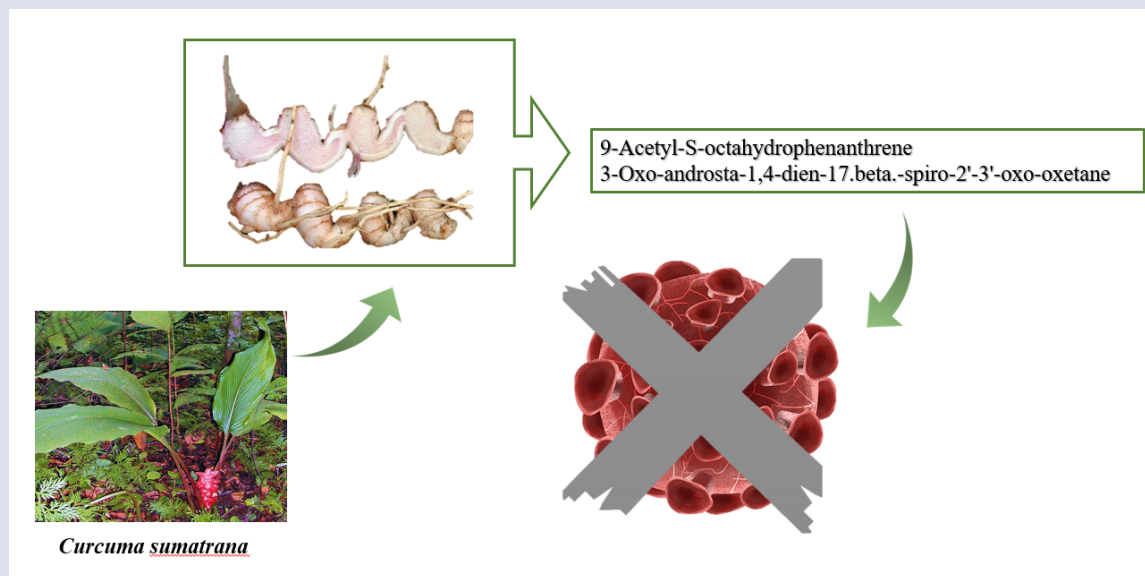
This research was funded by Government of the Republic of Indonesia, Ministry of Technology, Research and Higher Education and Rector of Universitas Negeri Padang for grant number 309/UN35/LT/2022 and 1756/UN35.13/LT/2022.

## REFERENCES

- Torre LA, Siegel RL, Ward EM, Jemal A. Global Cancer Incidence and Mortality Rates and Trend. *An Update Cancer Epidemiol Biomarkers Prev.* 2016;25(1):16-27.
- Torre LA, Bray F, Siegel RL, Ferlay J, Lortet-Tieulent J, Jemal A. Global cancer statistics, 2012. *CA: A Cancer J Clin.* 2015;65(2):87-108.
- Tong X, C Pelling J. Targeting the PI3K/Akt/mTOR axis by apigenin for cancer prevention. *Anti-Cancer Agents in Medicinal Chemistry (Formerly Current Medicinal Chemistry-Anti-Cancer Agents).* 2013;13(7):971-8.
- Rosyadi, GZ, Fitriani, SP, Lestari, F. Literature Study of Cytotoxic Activity of Genus *Curcuma* Rhizome Extract by Brine Shrimp Lethality Test (BSLT) Method. *Pharm Proceed.* 2021;468-74.
- Suryawati N, Jawi IM. Potential development of turmeric extract nanoparticles as a topical anti-inflammatory agent. *Bali Med J.* 2020;9(3):680-5.
- Nawawi JA. Effect of Ethanol Extract of Endemic Sumatran Rhizome (*Curcuma sumatrana*, zingiberaceae) on Intelligence Level, Brain Histological Structure and Concentration of Malondialdehydes in Mice Induced by Monosodium Glutamate. *Diploma thesis, Andalas Uni.* 2021.
- Pfeffer CM, Singh ATK. Apoptosis: A target for Anticancer Therapy. *Int J Mol Sci.* 2018;19:448.
- Earnshaw WC, Martins LM, Kaufmann SH. Mammalian caspases: Structure, activation, substrates, and functions during apoptosis. *Annu Rev Biochem.* 1999;68:383-424.
- Singh V, Khurana A, Navik U, Allawadhi P, Bharani KK, Weiskirchen R. Apoptosis and Pharmacological Therapies Targeting. *Cancer Ther Sci.* 2022;4:15.

10. Anggaraditya PB, Adiputra PAT, Widiana IK. EGFR nanovaccine in lung cancer treatment. *Bali Med J.* 2019;8(3):844-51.
11. Vishnuvarthan VJ, Lakshmi KS, Srividya AR. In-Silico Screening of Flavonoids targeted for Death Receptors in Cancer by Using Hex Molecular Docking. *J Young Pharm.* 2017;9(2):168-71.
12. Elkholi R, Renault TT, Serasinghe MN, Chipuk JE. Putting the pieces together: How is the mitochondrial pathway of apoptosis regulated in cancer and chemotherapy? *Cancer Metab.* 2014;2:16.
13. Lopez J, Tait SWG. Mitochondrial apoptosis: Killing cancer using the enemy within. *Brother J Cancer.* 2015;112:957-62.
14. Antonius Y, Kharisma VD, Widyananda MH, et al. Prediction of Aflatoxin-B1 (AFB1) Molecular Mechanism Network and Interaction to Oncoproteins Growth Factor in Hepatocellular Carcinoma. *J Pure Appl Microbiol.* 2022; 16(3): 1844-1854.
15. Widyananda MH, Pratama SK, Samoedra RS, Sari FN, Kharisma VD, Ansori ANM, Antonius YA. Molecular docking study of sea urchin (*Arbacia lixula*) peptides as multi-target inhibitor for non-small cell lung cancer (NSCLC) associated proteins. *Journal of Pharmacy and Pharmacognosy Research.* 2021; 9(4): 484-496.
16. Kharisma VD, Agatha A, Ansori ANM, Widyananda MH, Rizky WY, Dings TGA, et al. Herbal Combination from *Moringa oleifera* Lam. and *Curcuma longa* L. as SARS-CoV-2 antiviral via Dual Inhibitor Pathway: A viroinformatics approach. *J Pharm Pharmacog Res.* 2022;10(1):138-46.
17. Ongko J, Setiawan JV, Feronytha AG, Juliana A, Effraim A, Wahjudi M, Antonius Y. In-silico screening of inhibitor on protein epidermal growth factor receptor (EGFR). *IOP Conference Series: Earth and Environmental Science.* 2022; 1041: 012075.
18. Ansori ANM, Fadholly A, Hayaza S, Susilo RJK, Inayatillah B, Winarni D, et al. A review on medicinal properties of mangosteen (*Garcinia mangostana* L.). *Res J Pharm Tech.* 2020;13(2):974-82.
19. Wahyuni DK, Wacharasindhu S, Bankeeree W, Punnapayak H, Parikesit AA, Kharisma VD, et al. Molecular simulation of compounds from n-hexane fraction of *Sonchus arvensis* L. leaves as SARS-CoV-2 antiviral through inhibitor activity targeting strategic viral protein. *J Pharm Pharmacogn Res.* 2022;10(6):1126-38.
20. Antonius Y, Utomo DH, Widodo. Identification of potential biomarkers in nasopharyngeal carcinoma based on protein interaction analysis. *International Journal of Bioinformatics Research and Applications.* 2017; 13.
21. Fahmi M, Kharisma VD, Ansori ANM, Ito M. Retrieval and investigation of data on SARS-CoV-2 and COVID-19 using bioinformatics approach. *Adv Exp Med Biol.* 2021;1318:839-857.
22. Tamam MB, Naw WR, Ullah ME, Probojati RT, Murtadlo AAA, Turista DDR. Virtual Screening of *Kaempferia galanga* L. Bioactive Compounds as HPV-16 Antiviral Mechanism Through E6 Inhibitor Activity. *SAINSTEK Int J Appl Sci Adv Technol Informatics.* 2022;1(1):7-13.
23. Naw SW, Probojati RT, Murtadlo AAA, Ullah ME. Computational Drug Design Study of *Curcuma longa* L. Compound as HPV-16 Antiviral Candidate Against Cervical Cancer. *SAINSTEK Int J Appl Sci Adv Technol Informatics.* 2022;1(1):1-6.
24. Ansori ANM, Kharisma VD, Fadholly A, Tacharina MR, Antonius Y, Parikesit AA. Severe Acute Respiratory Syndrome Coronavirus-2 Emergence and Its Treatment with Alternative Medicines: A Review. *Res J Pharm Technol.* 2021;14(10):5551-7.
25. Kharisma VD, Ansori ANM, Widyananda MH, Utami SL, Nugraha AP. Molecular simulation: The potency of conserved region on E6 HPV-16 as a binding target of black tea compounds against cervical cancer. *Biochem Cell Archiv.* 2020;20:2795-802.
26. Prahasanti C, Nugraha AP, Kharisma VD, Ansori ANM, Ridwan RD, Putri TPS, et al. Un enfoque bioinformático de la exploración con compuestos de hidroxiapatita y polimetilmetacrilato como biomaterial de implantes dentales. *J Pharm Pharmacogn Res.* 2021;9(5):746-54.
27. Dibha AF, Wahyuningsih S, Ansori ANM, Kharisma VD, Widyananda MH, Parikesit AA, et al. Utilization of Secondary Metabolites in Algae *Kappaphycus alvarezii* as a Breast Cancer Drug with a Computational Method. *Pharmacogn J.* 2022;14(3):536-43.
28. Aini NS, Ansori ANM, Kharisma VD, Syadzha MF, Widyananda MH, Murtadlo AA, et al. Potential Roles of Purslane (*Portulaca oleracea* L.) as Antimetabolic Syndrome: A Review. *Pharmacogn J.* 2022;14(3):710-4.
29. Listiyani P, Kharisma VD, Ansori AN, Widyananda MH, Probojati RT, Murtadlo AA, et al. In Silico Phytochemical Compounds Screening of *Allium sativum* Targeting the Mpro of SARS-CoV-2. *Pharmacogn J.* 2022;14(3):604-9.
30. Aini NS, Kharisma VD, Widyananda MH, Murtadlo AA, Probojati RT, Turista DD, et al. In Silico Screening of Bioactive Compounds from *Syzygium cumini* L. and *Moringa oleifera* L. Against SARS-CoV-2 via Tetra Inhibitors. *Pharmacogn J.* 2022;14(4):267-72.
31. Aini NS, Kharisma VD, Widyananda MH, Murtadlo AA, Probojati RT, Turista DD, et al. Bioactive Compounds from Purslane (*Portulaca oleracea* L.) and Star Anise (*Illicium verum* Hook) as SARS-CoV-2 Antiviral Agent via Dual Inhibitor Mechanism: In Silico Approach. *Pharmacogn J.* 2022;14(4):352-7.
32. Wijaya RM, Hafidzhah MA, Kharisma VD, Ansori ANM, Parikesit AP. COVID-19 In Silico Drug with *Zingiber officinale* Natural Product Compound Library Targeting the Mpro Protein. *Makara J Sci.* 2021; 25(3): 5.

## GRAPHICAL ABSTRACT



## ABOUT AUTHORS



Rahadian Zainul has completed a Bachelor of Educational Chemistry in IKIP Padang, then continued his studies and obtained a Master of Chemistry at Universitas Andalas, and earned a Doctoral Chemistry degree at Universitas Andalas. He is a researcher on the design and modification of copper oxide for inactivation SARS-CoV-2 by stimulated indoor lights and a researcher on the design and modification of copper oxide by computation approach with DFTB+. He is also the Head of Cambiotics Research Center, Universitas Negeri Padang. The author has published 41 manuscripts in Scopus-indexed journals and also 8 h-index.

**Cite this article:** Rahman AT, Rafia, Jethro A, Santoso P, Kharisma VD, Murtadlo AAA, et al. *In Silico* Study of the Potential of Endemic Sumatra Wild Turmeric Rhizomes (*Curcuma Sumatrana*: Zingiberaceae) As Anti-Cancer. *Pharmacogn J.* 2022;14(6): 806-812.