



Research Article

Association between *HBA* locus copy number gains and pathogenic *HBB* gene variants

 Guven Toksoy¹,  Nergis Akay²,  Agharza Aghayev¹,  Volkan Karaman¹,  Sahin Avci¹,  Tugba Kalayci¹,
 Umut Altunoglu¹,  Zeynep Karakas²,  Zehra Oya Uyguner¹

¹Department of Medical Genetics, Istanbul University Istanbul Faculty of Medicine, Istanbul, Turkey

²Department of Pediatric Hematology-Oncology, Istanbul University Istanbul Faculty of Medicine, Istanbul, Turkey

Abstract

Objectives: Alpha (α) and beta (β) thalassemia are the most prevalent genetic hematological disorders. The co-occurrence of silent β -thalassemia with excess α -globin gene copies is associated with the thalassemia intermedia phenotype. This study was an investigation of the α -globulin gene dosage and sequence variations in thalassemia patients.

Methods: Multiplex ligation-dependent probe amplification and Sanger sequencing were used to identify the hemoglobin subunit alpha 1 (*HBA1*) and *HBA2* gene alterations in 32 patients. Deletion, duplication, and other findings were analyzed in the index cases and family members.

Results: Four of the 32 cases (12.5%) were found to have gross duplications. Two cases demonstrated α -globin triplication, and 2 had a quadruplicated *HBA1/2* genes. Affected family members revealed genotype-phenotype correlation. In 1 patient, it was observed that quadruplicated *HBA* genes co-occurrence with hemoglobin subunit beta (*HBB*) mutation was inherited from his mother. Notably, the mother did not demonstrate any thalassemia phenotype. Further investigation showed that the mother was carrying a single copy *HBA* gene deletion in the trans allele that explained her clinical condition.

Conclusion: This study examined the effect of increased copies of the *HBA* gene in *HBB* gene pathogenic variant carriers. The results indicated that β -thalassemia mutations with a co-occurrence of increased α -globin gene dosage is not very rare condition. Patients with clinical findings incompatible with their *HBB* genotypes should be investigated for small and gross α -globin gene variants in order to provide genetic counseling and prenatal diagnosis follow-up, as appropriate.

Keywords: Alpha-globin gene quadruplication, co-inheritance of *HBA* and *HBB*, multiplex ligation-dependent probe amplification, thalassemia intermedia

Alpha (α) and beta (β) thalassemia, blood disorders characterized by decreased hemoglobin production, are the most frequently observed genetic disorders in the world. The carrier frequency has been found to be high in populations where malaria is common [1-3]. Cross-national migration from endemic regions has led to spread of the disease [4, 5]. Thalassemia is classified into 2 types according to the defective gene: In α -thalassemia, the hemoglobin subunit alpha (*HBA*) gene cluster is damaged, and in cases of β -thalassemia, there are pathogenic variants in the hemoglobin subunit

beta (*HBB*) gene [6]. According to the globin mutation database, 940 point variants have been recorded that can lead to structural alterations, protein truncation, defective splicing, decrease in transcription, or loss of stability in the *HBB* gene [7]. The database also includes recordings of gross variants of *HBA1/2* genes, which are identified in 2% of thalassemia cases [8]. Four alleles of 2 structurally similar genes, *HBA1* and *HBA2* are responsible for α -globin gene expression and are critically important when establishing genotype-phenotype relationships in patients with β -thalassemia. Although the *HBA1* gene

Address for correspondence: Guven Toksoy, MD. Department of Medical Genetics, Istanbul University Istanbul Faculty of Medicine, Istanbul, Turkey

Phone: +90 212 414 20 00-35034 **E-mail:** guven.toksoy@istanbul.edu.tr **ORCID:** 0000-0002-8103-9980

Submitted Date: March 31, 2021 **Accepted Date:** April 20, 2021 **Available Online Date:** May 03, 2021

©Copyright 2021 by International Journal of Medical Biochemistry - Available online at www.internationalbiochemistry.com

OPEN ACCESS This work is licensed under a Creative Commons Attribution-NonCommercial 4.0 International License.



has 349 reported small sequence variants (also called non-deletion variants) reported in the globin mutation database and the *HBA2* gene has 455, large deletions are responsible for about 85% of patients with α -thalassemia [7]. Four phenotypes have been identified: hemoglobin Barts hydrops, with a loss of all 4 α -globin genes ($--/--$), which is usually fatal at birth; hemoglobin H (HbH) disease, with 3 missing α -globin genes ($--/-\alpha$), which generally includes only moderate symptoms and may not require clinical intervention; α -thalassemia trait/carrier, with 2 absent or inactive *HBA* genes ($-\alpha/-\alpha$ or $-/-\alpha\alpha$), which may result in very mild anemia; and α -thalassemia silent carrier, caused by the deletion of a single *HBA* gene ($-\alpha/\alpha\alpha$), which is asymptomatic [9-11].

Although non-deletion variants of α -globulin genes are rarely seen in α -thalassemia, the HbH phenotype occurring with the homozygous form of α -thalassemia ($\alpha^{\text{constant spring}}\alpha/-\alpha^{\text{constant spring}}$) results in a truncated *HBA2* messenger-type RNA nonsense mutation in *HBA2* and leads to a more severe clinical course than a deletion HbH phenotype and requires transfusions [10-12]. β -thalassemia is classified into 3 types: thalassemia major, thalassemia intermedia, and thalassemia minor. The type is based on the nature of the mutation, protein function (β^0 or β^+), and zygosity, and is reflected in the severity of clinical symptoms. Heterozygous carriers are usually moderately anemic or healthy, though a few exceptions have been reported.

In addition to moderate/mild homozygous variations, compound heterozygotes or an elevated fetal hemoglobin level can influence the clinical picture [13-15]. Co-existing α -thalassemia and β -thalassemia is most frequently reported in Asian countries, which have a high prevalence of carriers of both α - and β -thalassemia [16-19].

Genotype-phenotype discordance has been reported in the literature in β -thalassemia intermedia and β -thalassemia minor cases. Inconsistency in hematological findings and β -thalassemia traits may be observed in circumstances such as iron deficiency, co-inheritance of α - and β -thalassemia variant heterozygosity, co-inheritance of *HBB* variations, and other globin gene variants [13]. Hepatitis, folic acid or vitamin B12 deficiency can also cause upregulation of α -thalassemia genes, leading to difficulties in interpreting genotype. The coupling of α -thalassemia alterations with *HBB* mutations may affect α/β globin ratio [20, 21]. In heterozygous *HBB* variant carriers, the phenotype may become more severe if there are also gains in α globin. On the contrary, in homozygous or compound heterozygous *HBB* variant carriers, the clinic may be milder if there is also a loss in *HBA* genes [22].

This study examined the effect of increased copies of the *HBA* genes in *HBB* gene pathogenic variant carriers.

Materials and Methods

This study was approved by the Istanbul University İstanbul Faculty of Medicine Ethics Committee on January 28, 2021 (no: 52410). The study cohort comprised 32 patients with hema-

tological findings of thalassemia who were referred from the Istanbul Faculty of Medicine Pediatric Hematology Unit to the Istanbul Faculty of Medicine Department of Medical Genetics for genetic testing and counseling. Detailed pedigrees of the patients were recorded, medical findings were reviewed, and peripheral blood samples were collected upon receipt of written, informed consent.

DNA isolation was performed using a nucleic acid extraction kit (MagNA Pure; Roche Diagnostics, Basel, Switzerland). Primers were designed in-house for the *HBA1* (NM_000558.5), *HBA2* (NM_000517.6), and *HBB* (NM_000518.5) genes for Sanger sequencing using a genome analyzer (ABI3500). Deletion and duplication analysis was performed using multiplex ligation-dependent probe amplification (MLPA) (MLPA Probe-mix P140 *HBA*; MRC-Holland bv, Amsterdam, The Netherlands) and analyzed with Coffalyser.Net MLPA analysis software (MRC-Holland bv, Amsterdam, The Netherlands).

Results

In all, 4 index patients and family members were identified as variant carriers of the *HBB* gene with an increased *HBA* copy number. The mean hematological data was red blood cell count: $5.3 \times 10^6 \pm 1.4/\text{mm}^3$ (range: $3.9-7.2 \times 10^6/\text{mm}^3$), mean corpuscular volume (MCV): $59.8 \text{ fL} \pm 7.6$ (range: $55.1-71.1 \text{ fL}$), mean corpuscular hemoglobin (MCH): $18.7 \pm 2.6 \text{ pg}$ (range: $17.1-2.26 \text{ pg}$), Hb: $8.2 \pm 0.9 \text{ g/dL}$ (range: $7.2-9.2 \text{ g/dL}$), HbA $87.4 \pm 7.2\%$ (range: $76.7-92.3\%$), and HbA2: $4.9 \pm 1.7\%$ (range: $2.6-6.7\%$).

The hematological and molecular findings of the study cases and family members are presented in Figures 1-4. In Family 1, the index case and affected sister were found to have ~81Kb of heterozygous quadruplication in the α -globin re-

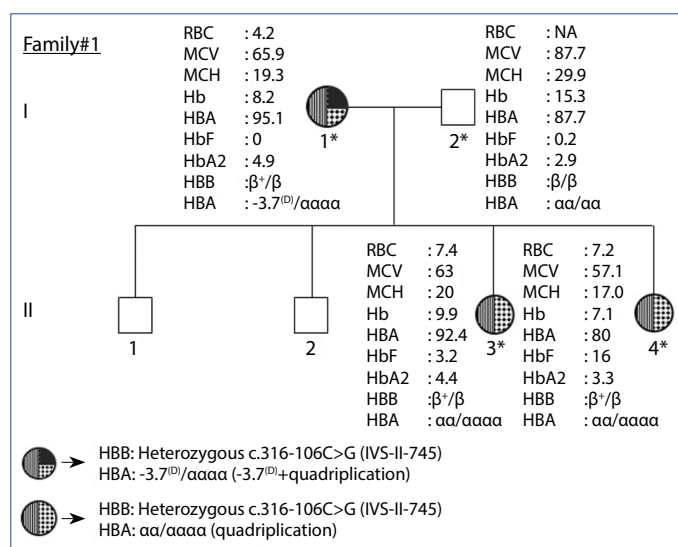


Figure 1. Genetic and hematological results of Family 1.

Hb: Hemoglobin; HBA: Hemoglobin subunit alpha; HbA2: Hemoglobin subunit alpha 2; HBB: Hemoglobin subunit beta; HbF: Fetal hemoglobin; MCH: Mean corpuscular hemoglobin; MCV: Mean corpuscular volume; RBC: Red blood cell count.

gion (beginning in the HS40 element) with β^+ associated heterozygous c.316-106C>G (IVS-II-745, rs34690599) in the *HBB* gene. In addition to these 2 mutations, their mother had an *HBA* -3.7^(D) heterozygous deletion in the other *HBA* allele. The father's results were normal (Fig. 1). In the index case of Family 2, an *HBB* heterozygous c.92+1G>A (IVS-I-1, rs33971440)

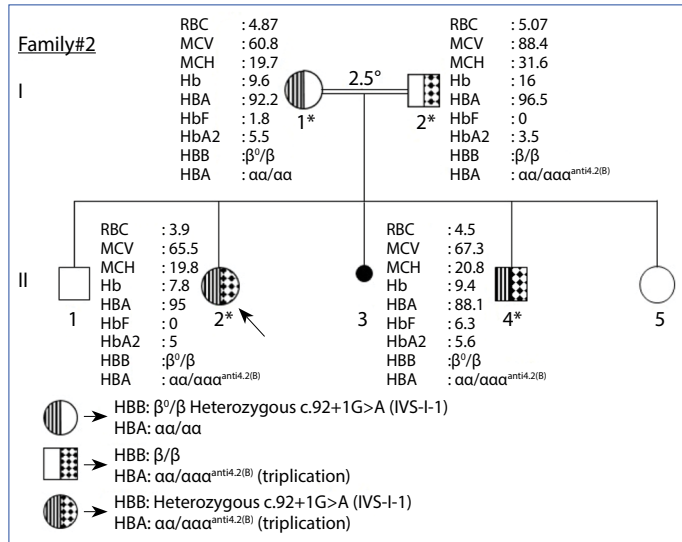


Figure 2. Genetic and hematological results of Family 2.

Hb: Hemoglobin; HBA: Hemoglobin subunit alpha; HbA2: Hemoglobin subunit alpha 2; HBB: Hemoglobin subunit beta; HbF: Fetal hemoglobin; MCH: Mean corpuscular hemoglobin; MCV: Mean corpuscular volume; RBC: Red blood cell count.

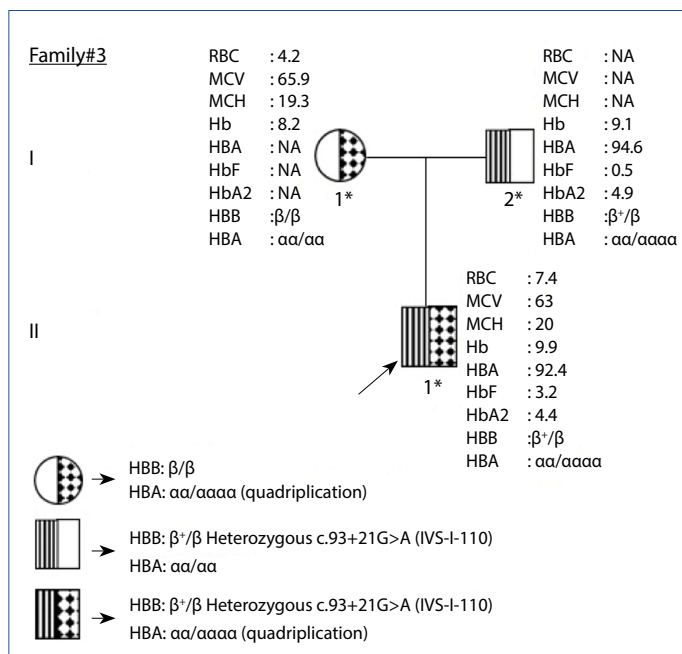


Figure 3. Genetic and hematological results of Family 3.

Hb: Hemoglobin; HBA: Hemoglobin subunit alpha; HbA2: Hemoglobin subunit alpha 2; HBB: Hemoglobin subunit beta; HbF: Fetal hemoglobin; MCH: Mean corpuscular hemoglobin; MCV: Mean corpuscular volume; RBC: Red blood cell count.

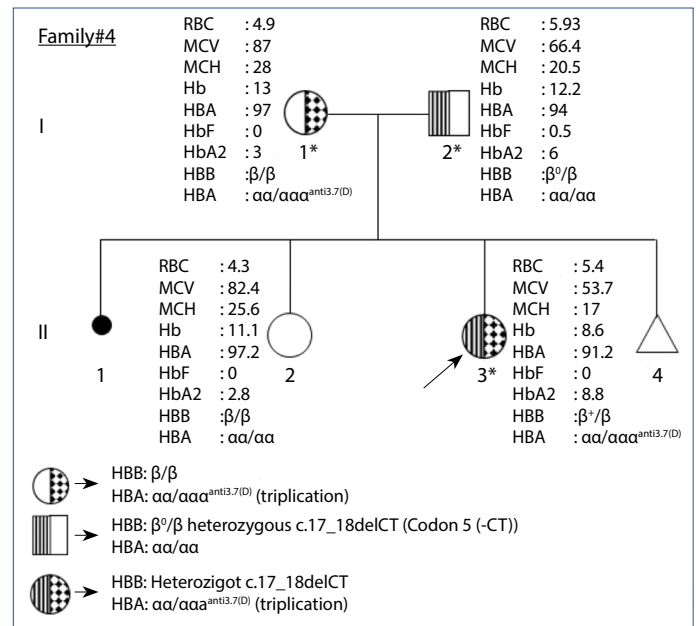


Figure 4. Genetic and hematological results of Family 4.

Hb: Hemoglobin; HBA: Hemoglobin subunit alpha; HbA2: Hemoglobin subunit alpha 2; HBB: Hemoglobin subunit beta; HbF: Fetal hemoglobin; MCH: Mean corpuscular hemoglobin; MCV: Mean corpuscular volume; RBC: Red blood cell count.

mutation and $\alpha\alpha\alpha^{anti4.2(B)}$ were detected. The affected brother had a similar genotype, while the other siblings had inherited the *HBB* mutation from the mother and *HBA* triplication from the father (Fig. 2). In Family 3, heterozygote c.93-21G>A (IVS-I-110, rs35004220) in the *HBB* gene and ~81Kb of heterozygous quadruplication (beginning in the HS40 region) were detected in the *HBA* locus of the index case. Investigation of the family showed that the patient had inherited both digenic alterations from the father (Fig. 3). The index case of Family 4 carried a heterozygous c.17_18delCT (p.Pro6fs, rs34889882) inherited from the *HBB* gene of his father and $\alpha\alpha\alpha^{anti3.7(D)}$ from his mother (Fig. 4).

Discussion

Co-inheritance of β -thalassemia and α -thalassemia is frequently seen in populations where carriers of both α - and β -hemoglobinopathy are prevalent [16, 23]. Cases with co-inheritance of β -thalassemia with α -globin gene deletion typically are presented with a milder phenotype. This is a result of a decrease in α/β globin ratio that is higher in β -thalassemia cases carrying a normal copy number of *HBA* genes [22, 24]. It has been reported that the coexistence of *HBB* mutations and *HBA1/HBA2* gene triplication or quadruplication results in a more severe phenotype since the ratio of α/β is predicted to deteriorate as the α -globin dose increases [18, 25-33]. In the present study, we found 4 β -thalassemia carrier cases with an α -globin gene copy gain and an unusual phenotype. Each member of the families had an intrafamilial genotype-phenotype correlation. Cebrian et al. [34] reported a milder pheno-

type in heterozygous *HBB* carriers than homozygous carriers among members of a family carrying *HBB* c.93-21G> A (β^+) and *HBA* triplication. In a study of 6 families, Origa et al. [35] reported the need for transfusions in 4 of 14 individuals with a quadruplicated α -globin gene and *HBB* heterozygotes. Other family members had milder phenotypes, despite carrying the same genotype as a result of other genetic factors. Similarly, Farashi et al. [25] observed a thalassemia intermedia phenotype in a patient with heterozygous β -thalassemia found to carry 6 α -globin gene copies. The daughter of this patient had the same *HBB* genotype but 7 copies of α -globin and a clinically similar phenotype to her father.

The fact that our patients with triplication and quadruplication of the α -globin gene and mono-allelic *HBB* mutations had a moderate-to-severe thalassemia intermedia phenotype was consistent with the literature. Our study findings similarly supported reports that α/β globin ratios influence the severity of the disease [17, 22, 36]. In Family 1, the mother's heterozygous *HBB* mutation and *HBA* gene deletion/quadruplication in trans form resulted in a milder phenotype than the index. This case is a good example of why even silent *HBA* alterations should be investigated for segregation to reveal genotype-phenotype variation in the family. Expansion of the segregation may further aid our understanding of the effect of variants in Families 2, 3, and 4, in which *HBB* and *HBA* genes variants were found to inherited bi-parentally. While the parent with the *HBB* mutation alone demonstrated classic β -thalassemia minor, no clinical consequence was revealed in the parents with only α -globin gains. The β^+ *HBB* mutation in our 2 families with triplication and β^0 in the *HBB* mutations in the families with quadruplicated *HBA* prevented comparison of the copy number effect in those families. However, all of the index cases and affected siblings had similar genotypes compatible with thalassemia intermedia. In Family 3, detailed analysis was not possible because the only hematological information for the index patient's father that was available was the molecular results.

Non-allelic homologous recombination is the mechanism for the formation of deletions in α -thalassemia. One product of this recombination is deletion, however, duplication (triplication or quadruplication) is also possible [37, 38]. The frequency of duplication and deletion should be similar according to the mechanism. Though it is thought that there should be more carriers of duplication, since it does not cause mortality and morbidity, as deletions can, α -globin gene deletions have a heterozygous advantage over the malaria parasite, and over time the deletions have become more frequent [1, 39]. This may be why *HBA* deletions are observed more often in *HBB* carriers than duplications. Wu et al. [40] reported that triplications in southern China were 3 times more frequent than quadruplication. Frequent observance of both α - and β -thalassemia mutations in geographical regions where hemoglobinopathies are common leads to the formation of complex thalassemia, resulting in phenotypic findings. Individuals who do not carry the *HBB* mutation but carry α -globin gene dupli-

cation are phenotypically normal. Therefore, these duplications are typically only revealed incidentally [35].

HBA studies in Turkey have been performed using restriction enzyme and gap-polymerase chain reaction methods for many years [41, 42]. Target-specific reverse dot blot kits (strip assay) have also been used [43-45]. However, since studies with these widely used kits were limited to targeted regions, only α anti-3.7 increases from α -globin gains could be investigated. In recent years, the widespread use of MLPA studies has allowed for the identification of a wide spectrum of deletions and duplications in the *HBA* locus [8, 46]. Our study is important in that α -globin dosage increases in *HBB* heterozygous carriers revealed atypical clinical findings.

Children, born to parents one carrying *HBB* and the other *HBA* mutation or multiplication (triplication, quadruplication, etc.), have an increased risk for thalassemia intermedia. Farashi et al. [47] reported that co-inheritance of *HBB* carriers and α -globin gene multiplications was as high as 25% in some parts of Iran. Therefore, prenatal *HBA* analysis should be performed for *HBB* carriers. In this study, *HBA* gains were detected in 4 of 32 families (12.5%) with atypical clinical findings of *HBB* mutation. Co-inheritance of *HBA* gains and *HBB* mutations is not very rare in our population. Low MCV and MCH values in *HBA*-deletion carriers compared with normal individuals suggest the need for *HBA* molecular tests. However, since α -globin dose increases do not prompt a clinical finding in carriers, they pose a risk for the fetal phenotype in prenatal diagnosis and create difficulty in genetic counseling. The study of possible *HBA1/HBA2* gene mutations and dosage increases in β -thalassemia cases with phenotypes that do not match clinical expectations is an auxiliary factor in prenatal diagnosis and genetic counseling to identify the risk of inherited hemoglobinopathy and making informed decisions.

Conclusion

According to the data obtained in this study, *HBA* gene increases can be detected in *HBB* cases showing genotype-phenotype discordance at a rate that cannot be ignored. The detection of carrier families and individuals will contribute to accurate and effective guidance and genetic counseling in prenatal diagnosis or PGD studies.

Acknowledgments: We would like to sincerely thank Gülendem Bagirova, MsC, and Alev Yalın, BS, for their contributions to our molecular laboratory research.

Conflict of Interest: The authors declare that there there is no conflict of interest regarding the publication of this article.

Ethics Committee Approval: This study was approved by the Istanbul University Istanbul Faculty of Medicine Ethics Committee on January 28, 2021 (no: 52410).

Financial Disclosure: The authors declared that this study has received no financial support.

Peer-review: Externally peer-reviewed.

Authorship Contributions: Concept – G.T., A.A., V.K., Z.O.U.; Design – G.T., A.A., S.A., Z.K., Z.O.U.; Supervision – G.T., Z.K., Z.O.U.; Funding – G.T., U.A., S.A., T.K., Z.O.U.; Materials – N.A., S.A., T.K., U.A., V.K., Z.K.; Data collection &/or processing – N.A., S.A., T.K., U.A., Z.K., A.A., V.K.; Analysis and/or interpretation – G.T., T.K., S.A., N.A., U.A., Z.O.U.; Literature search – G.T., T.K., S.A., U.A., V.K., Z.O.U.; Writing – G.T., Z.O.U.; Critical review – G.T., Z.K., Z.O.U.

References

- Lie-Injo LE, Herrera AR, Kan YW. Two types of triplicated alpha-globin loci in humans. *Nucleic Acids Res* 1981;9(15):3707–17.
- Flint J, Hill AV, Bowden DK, Oppenheimer SJ, Sill PR, Serjeantson SW, et al. High frequencies of alpha-thalassaemia are the result of natural selection by malaria. *Nature* 1986;321(6072):744–50.
- Angastiniotis M, Lobitz S. Thalassemsias: an overview. *int j neonatal screen* 2019;5(1):16. [CrossRef]
- Weatherall DJ, Clegg JB. *The thalassaemia syndromes*. New York: John Wiley & Sons; 2008.
- Nadkarni AH, Gorakshakar AC, Sawant PM, Italia KY, Upadhye DS, Gorivale MS, et al. The phenotypic and molecular diversity of hemoglobinopathies in India: A review of 15 years at a referral center. *Int J Lab Hematol* 2019;41(2):218–26. [CrossRef]
- Mahdieh N, Rabbani B. Beta thalassaemia in 31,734 cases with HBB gene mutations: Pathogenic and structural analysis of the common mutations; Iran as the crossroads of the Middle East. *Blood Rev* 2016;30(6):493–508. [CrossRef]
- HbVar: A database of human hemoglobin variants and thalassemsias. Available at: https://globin.bx.psu.edu/cgi-bin/hbvar/query_vars3. Accessed Apr 27, 2021.
- Hartevelde CL, Voskamp A, Phylipsen M, Akkermans N, den Dunnen JT, White SJ, et al. Nine unknown rearrangements in 16p13.3 and 11p15.4 causing alpha- and beta-thalassaemia characterised by high resolution multiplex ligation-dependent probe amplification. *J Med Genet* 2005;42(12):922–31.
- Hartevelde CL, Higgs DR. Alpha-thalassaemia. *Orphanet J Rare Dis* 2010;5:13. [CrossRef]
- Laosombat V, Viprakasit V, Chotsampancharoen T, Wongchan-chailert M, Khodchawan S, Chinchang W, et al. Clinical features and molecular analysis in Thai patients with HbH disease. *Ann Hematol* 2009;88(12):1185–92. [CrossRef]
- Farashi S, Hartevelde CL. Molecular basis of alpha-thalassaemia. *Blood Cells Mol Dis* 2018;70:43–53. [CrossRef]
- Vernimmen D. Globins, from Genes to Physiology and Diseases. *Blood Cells Mol Dis* 2018;70:1. [CrossRef]
- Galanello R, Cao A. Relationship between genotype and phenotype. *Thalassaemia intermedia*. *Ann N Y Acad Sci* 1998;850:325–33. [CrossRef]
- Thein SL. Genetic modifiers of beta-thalassaemia. *Haematologica* 2005;90(5):649–60.
- Uda M, Galanello R, Sanna S, Lettre G, Sankaran VG, Chen W, et al. Genome-wide association study shows BCL11A associated with persistent fetal hemoglobin and amelioration of the phenotype of beta-thalassaemia. *Proc Natl Acad Sci U S A* 2008;105(5):1620–5. [CrossRef]
- Wee YC, Tan KL, Kuldip K, Tai KS, George E, Tan PC, et al. Alpha-thalassaemia in association with beta-thalassaemia patients in Malaysia: a study on the co-inheritance of both disorders. *Community Genet* 2008;11(3):129–34. [CrossRef]
- Shahid S, Nadeem M, Zahid D, Hassan J, Ansari S, Shamsi T. Alpha thalassaemia deletions found in suspected cases of beta thalassaemia major in Pakistani population. *Pak J Med Sci* 2017;33(2):411–6. [CrossRef]
- Clark B, Shooter C, Smith F, Brawand D, Steedman L, Oakley M, et al. Beta thalassaemia intermedia due to co-inheritance of three unique alpha globin cluster duplications characterised by next generation sequencing analysis. *Br J Haematol* 2018;180(1):160–4. [CrossRef]
- Pandey H, Ranjan R, Singh K, Sharma A, Kishor K, Seth T, et al. Contrasting co-inheritance of alpha and beta mutations in delta beta thalassaemia and hereditary persistence of fetal hemoglobin: a study from India. *Hematology* 2018;23(9):692–6. [CrossRef]
- Traeger-Synodinos J, Hartevelde CL, Old JM, Petrou M, Galanello R, Giordano P, et al. EMQN Best Practice Guidelines for molecular and haematology methods for carrier identification and prenatal diagnosis of the haemoglobinopathies. *Eur J Hum Genet* 2015;23(4):426–37. [CrossRef]
- AbdulAzeez S, Almandil NB, Naserullah ZA, Al-Jarrash S, Al-Suliman AM, Elfakharay HI, et al. Co-inheritance of alpha globin gene deletion lowering serum iron level in female beta thalassaemia patients. *Mol Biol Rep* 2020;47(1):603–6. [CrossRef]
- Winichagoon P, Fucharoen S, Chen P, Wasi P. Genetic factors affecting clinical severity in beta-thalassaemia syndromes. *J Pediatr Hematol Oncol* 2000;22(6):573–80. [CrossRef]
- Giordano PC, Hartevelde CL, Bok LA, van Delft P, Batelaan D, Beemer FA, et al. A complex haemoglobinopathy diagnosis in a family with both beta zero- and alpha (zero/+)-thalassaemia homozygosity. *Eur J Hum Genet* 1999;7(2):163–8. [CrossRef]
- Dehnabeh SR, Mahdian R, Ajdary S, Mostafavi E, Khatami S. Correlation between Plasma Interleukin-3, the α/β Globin Ratio, and Globin mRNA Stability. *Anemia* 2014;2014. [CrossRef]
- Farashi S, Vakili S, Faramarzi Garous N, Ashki M, Imanian H, Azarkeivan A, et al. Copy number variations of six and seven alpha-globin genes in a family with intermedia and major thalassaemia phenotypes. *Expert Rev Hematol* 2015;8(5):693–8. [CrossRef]
- Giordano PC, Bakker-Verwij M, Hartevelde CL. Frequency of alpha-globin gene triplications and their interaction with beta-thalassaemia mutations. *Hemoglobin* 2009;33(2):124–31.
- Hartevelde CL, Refaldi C, Cassinerio E, Cappellini MD, Giordano PC. Segmental duplications involving the alpha-globin gene cluster are causing beta-thalassaemia intermedia phenotypes in beta-thalassaemia heterozygous patients. *Blood Cells Mol Dis* 2008;40(3):312–6. [CrossRef]
- Henni T, Belhani M, Morle F, Bachir D, Tabone P, Colonna P, et al. Alpha globin gene triplication in severe heterozygous beta thalassaemia. *Acta Haematol* 1985;74(4):236–9. [CrossRef]

29. Kanavakis E, Metaxotou-Mavromati A, Kattamis C, Wainscoat JS, Wood WG. The triplicated alpha gene locus and beta thalassaemia. *Br J Haematol* 1983;54(2):201–7. [\[CrossRef\]](#)
30. Kulozik AE, Thein SL, Wainscoat JS, Gale R, Kay LA, Wood JK, et al. Thalassaemia intermedia: interaction of the triple alpha-globin gene arrangement and heterozygous beta-thalassaemia. *Br J Haematol* 1987;66(1):109–12. [\[CrossRef\]](#)
31. Panigrahi I, Mahapatra M, Kumar R, Kumar G, Choudhry Ved P, Saxena R. Jaundice and alpha gene triplication in beta-thalassaemia: association or causation? *Hematology* 2006;11(2):109–12. [\[CrossRef\]](#)
32. Sampietro M, Cazzola M, Cappellini MD, Fiorelli G. The triplicated alpha-gene locus and heterozygous beta thalassaemia: a case of thalassaemia intermedia. *Br J Haematol* 1983;55(4):709–10. [\[CrossRef\]](#)
33. Thein SL, Al-Hakim I, Hoffbrand AV. Thalassaemia intermedia: a new molecular basis. *Br J Haematol* 1984;56(2):333–7. [\[CrossRef\]](#)
34. Yus Cebrian F, Recasens Flores Mdel V, Izquierdo Alvarez S, Parra Salinas I, Rodriguez-Vigil Iturrate C. Combination of a triple alpha-globin gene with beta-thalassaemia in a gypsy family: importance of the genetic testing in the diagnosis and search for a donor for bone marrow transplantation for one of their children. *BMC Res Notes* 2016;9:220. [\[CrossRef\]](#)
35. Origa R, Sollaino MC, Borgna-Pignatti C, Piga A, Feliu Torres A, Masile V, et al. Alpha-globin gene quadruplication and heterozygous beta-thalassaemia: a not so rare cause of thalassaemia intermedia. *Acta Haematol* 2014;131(3):162–4. [\[CrossRef\]](#)
36. Steinberg-Shemer O, Ulirsch JC, Noy-Lotan S, Krasnov T, Attias D, Dgany O, et al. Whole-exome sequencing identifies an alpha-globin cluster triplication resulting in increased clinical severity of beta-thalassaemia. *Cold Spring Harb Mol Case Stud* 2017;3(6). [\[CrossRef\]](#)
37. Goossens M, Dozy AM, Embury SH, Zachariades Z, Hadjiminias MG, Stamatoyannopoulos G, et al. Triplicated alpha-globin loci in humans. *Proc Natl Acad Sci U S A* 1980;77(1):518–21.
38. Higgs DR, Old JM, Pressley L, Clegg JB, Weatherall DJ. A novel alpha-globin gene arrangement in man *Nature* 1980;284(5757):632–5. [\[CrossRef\]](#)
39. Kariuki SN, Williams TN. Human genetics and malaria resistance. *Hum Genet* 2020;139(6–7):801–11. [\[CrossRef\]](#)
40. Wu MY, Zhou JY, Li J, Li DZ. The frequency of alpha-globin gene triplication in a Southern Chinese population. *Indian J Hematol Blood Transfus* 2016;32(Suppl 1):320–2. [\[CrossRef\]](#)
41. Gurgey A, Altay C, Beksaç M, Bhattacharya R, Kutlar F, Huisman T. Hydrops fetalis due to homozygosity for α -thalassaemia-1, -(α)-20.5 kb: the first observation in a Turkish family. *Acta haematologica* 1989;81(3):169–71. [\[CrossRef\]](#)
42. Oner C, Gurgey A, Oner R, Balkan H, Gumruk F, Baysal E, et al. The molecular basis of Hb H disease in Turkey. *Hemoglobin* 1997;21(1):41–51. [\[CrossRef\]](#)
43. Bozdogan ST, Yuregir OO, Buyukkurt N, Aslan H, Ozdemir ZC, Gambin T. Alpha-thalassaemia mutations in adana province, southern Turkey: genotype-phenotype correlation. *Indian J Hematol Blood Transfus* 2015;31(2):223–8. [\[CrossRef\]](#)
44. Guvenc B, Yildiz SM, Tekinturhan F, Dincer S, Akyuzluer I, Okten S, et al. Molecular characterization of alpha-Thalassaemia in Adana, Turkey: A single center study. *Acta Haematol* 2010;123(4):197–200. [\[CrossRef\]](#)
45. Karakas Z, Koc B, Temurhan S, Elgun T, Karaman S, Asker G, et al. Evaluation of alpha-thalassaemia mutations in cases with hypochromic microcytic anemia: The Istanbul perspective. *Turk J Haematol* 2015;32(4):344–50. [\[CrossRef\]](#)
46. Onay H, Ekmekçi A, Ataman E, Akgül M, Vahabi A, Aydınoğlu Y, et al. B-talasemi hastalarında MLPA yöntemi ile HBA mutasyonlarının saptanması. *Gaziantep Medical Journal* 2009;15(1):1–4.
47. Farashi S, Bayat N, Faramarzi Garous N, Ashki M, Montajabi Niat M, Vakili S, et al. Interaction of an alpha-globin gene triplication with beta-globin gene mutations in Iranian patients with beta-thalassaemia intermedia. *Hemoglobin* 2015;39(3):201–6.