

Original Research

# Serum Microelements, Amino Acids and Acyl Carnitines Levels in Pregnancies Complicated with Preeclampsia: A Prospective Study

Min Zhang<sup>1,†</sup>, Hanglin Wu<sup>1,†</sup>, Limin Yu<sup>1</sup>, Tengfei Luo<sup>1</sup>, Caihe Wen<sup>1</sup>, Yun Chai<sup>1,\*</sup>

<sup>1</sup>Department of Obstetrics and Gynaecology, Hangzhou Women's Hospital, 310008 Hangzhou, Zhejiang, China

\*Correspondence: [chy98323@aliyun.com](mailto:chy98323@aliyun.com) (Yun Chai)

†These authors contributed equally.

Academic Editor: Shigeki Matsubara

Submitted: 4 January 2022 Revised: 18 February 2022 Accepted: 28 February 2022 Published: 19 May 2022

## Abstract

**Background:** To evaluate the feasibility of serum microelements, amino acids and acyl carnitine levels to predict maternal complications and adverse infant outcomes in pregnancies complicated by preeclampsia. **Methods:** We launched a prospective study including 81 pregnant patients. Serum microelements, amino acids and acyl carnitine levels were tested using external calibration technique or high-performance liquid chromatography tandem mass spectrometry. Concentrations of metabolites were compared between the preeclampsia and control groups. Logistic regression models were used to assess the relevance between the metabolites and pregnancy outcomes in preeclampsia patients without severe features. **Results:** Concentrations of some microelements, amino acids and acyl carnitines were significantly higher or lower in preeclampsia patients. Women with severe preeclampsia had significantly lower (hexadecanoyl carnitine + octadecenoyl carnitine)/acetyl carnitine [(C16 + C18:1)/C2] compared to mothers without severe features. Lower (C16 + C18:1)/C2 was found in women who developed maternal complications ( $p = 0.07$ ) or experienced adverse infant outcomes ( $p < 0.01$ ) compared with those who did not in patients without severe features. Levels of (C16 + C18:1)/C2 at enrollment resulted in moderate prediction rates for maternal outcomes [areas under the curves (AUC) 0.746, 95% Confidence Interval (CI) 0.543, 0.948] and perinatal outcomes (AUC 0.871, 95% CI 0.729, 1.000). **Conclusions:** Maternal levels of microelements, amino acids and acyl carnitines were associated with preeclampsia. Levels of (C16 + C18:1)/C2 seemed to be a potential biomarker in the prediction of maternal complications and adverse infant outcomes in preeclampsia patients without severe features. Further studies are needed to validate its predictive application.

**Keywords:** acyl carnitine; amino acid; microelements; preeclampsia; pregnancy

## 1. Introduction

Preeclampsia (PE) is a multisystem disease occurring in pregnancy that is defined as an elevation of blood pressure with proteinuria or other maternal organ damage after 20 weeks of gestation [1]. PE complicates approximately 6% of pregnancies globally and accounts for more than 10% of maternal death, especially in low-income countries [2,3]. Previous data indicated that some markers predicted the occurrence of PE and PE-severity, however, the models either have had limited predictive value or could not be replicated in further studies [4,5].

Some patients with PE may experience complications such as eclampsia or heart failure following conservative management, while other women can deliver at term without adverse events [1]. Due to the unpredictable nature of adverse outcomes in this population, there is no clinical data or laboratory test which has been proved to predict adverse outcomes with high accuracy [6–8].

Information is lacking on whether the changes in amino acids or acyl carnitines levels occur prior to the occurrence of adverse events in patients with PE. Our study aimed to investigate possible correlations between concentrations of microelement, amino acids and acyl carnitines and clinical outcomes and to expand the search for new

biomarkers for prediction of maternal and perinatal outcomes in women with PE.

## 2. Materials and Methods

This prospective cohort study was approved by the medical ethics committee of Hangzhou Women's Hospital (No. 2018-007-01) and carried out between January 2019 and December 2020. Pregnant women with/without PE during the third trimesters of pregnancy were invited to participate and written informed consent was obtained. The PE group consisted of 49 patients with pregnancy complicated by PE while the other group included 32 normotensive controls who were randomly selected without matching. PE was diagnosed according to "Obstetrics and Gynaecology", using the eighth edition diagnostic criteria for China [9]. Patients who had received treatment and then referred to our hospital were also included in our study. Pregnancies with fetal congenital anomalies or stillbirths were excluded.

Data on maternal characteristics including age, gestational age, parity, weight, height, gestational weight gain and medical history were subsequently collected on women in both groups. The occurrence of proteinuria and blood pressure measurements within 48 hours before enrollment in the PE group were also recorded. Maternal blood was



drawn upon enrollment regardless of fasting status or recent consumption of fatty foods. Collected blood was allowed to stand from 30 to 60 minutes for coagulation stratification. After centrifuging at 3000 rpm for 10 minutes at room temperature, the supernatant was transferred to a new centrifuge tube. This tube was centrifuged at 1,2000 rpm for 10 minutes at 4 °C and serum specimens were stored at –80 °C until analysis. All participants were followed through maternal and infant hospital discharge. The treatment of participants in PE group (including but not limited to antihypertensive therapy, magnesium sulfate, use of steroids for promoting fetal lung maturation and the timing and mode of termination of pregnancy) was controlled by the decision of the medical group or outpatient physician.

Data on pregnancy outcomes was collected through hospital medical records. Maternal outcomes comprised blood pressure measurements, use of antihypertensive drugs, placental abruption, and progression to severe PE which was diagnosed when at least one of the following occurred: systolic blood pressure  $\geq 160$  mmHg, diastolic blood pressure  $\geq 110$  mmHg, platelet count  $< 100 \times 10^9/L$ , abnormal liver function enzymes, renal impairment, pulmonary edema, new-onset neurological symptoms [1]. Perinatal outcomes comprised stillbirth, neonatal death during hospital, admission to the neonatal unit, birthweight less than tenth centile, Apgar score less than 7 points at 5 min after birth and need for respiratory support.

Before performing analyses of microelements, serum specimens were thawed, vortexed, and centrifuged at 5000 rpm for 5 minutes. Following this they were then analyzed utilizing inductively coupled plasma mass spectrometer NexION 350D (PerkinElmer, Shelton, CT, USA) which was calibrated using an external calibration technique.

Amino acid releasing agents were purchased from Baichen medical laboratory Co., Ltd. (Hangzhou, Zhejiang, China), which was used for the pretreatment of dry blood filter paper to release the bound amino acids for clinical detection of free amino acids. Amino acid carboxyl groups react with alcohol groups to form esters which improve the response in mass spectrometry. The stock solutions of internal standard were prepared in amino acid releasing agent A/water (1:50). After vortex mixing for 3 minutes and centrifuging at 11000 rpm for 10 minutes, 70  $\mu L$  supernatant was evaporated under nitrogen gas flow and reconstituted in 60  $\mu L$  of amino acid releasing agent B and incubated at 30 minutes at 60 °C. After adding 100  $\mu L$  amino acid releasing agent C and being vortexed for 3 minutes, 5  $\mu L$  of the supernatant was injected into the high-performance liquid chromatography tandem mass spectrometry (HPLC-MS) system for analysis.

For the analyses of acyl carnitines, a single 3-mm diameter dry blood spot (1/8 inch) was placed in a well of a U-bottom microstate polystyrene plate (Guangzhou Fenghua Biological Engineering Co., Ltd, Guangzhou, Guangdong, China) and 100  $\mu L$  of an extraction solution was added

based on deuterium-labelled internal standards (acyl carnitines: extraction solution, 1:108). The microwell plate was covered with viscous plastic sealing film and incubated for 30 minutes at 30 °C. After seal removal, aliquots of the sample extracts (60  $\mu L$ ) were transferred to a heat-resistant porous V-bottom plate (Guangzhou Fenghua Biological Engineering Co., Ltd, China). The plate, which was covered with an aluminium foil wrapper, was prepared for HPLC-MS analysis.

Analyses of amino acids and acyl carnitines were conducted using an Acquity HPLC chromatographic system coupled to an Acquity TQD tandem-quadrupole mass spectrometer (Waters, Milford, MA, USA). Acquired data were evaluated using TargetLynx software (Waters), by integration of assigned Multiple Reaction Monitoring peaks and normalization using proper internal standards. Personnel data of the groups were concealed from the laboratory inspectors. For the analyses of serum specimens, we quantified 8 trace elements, 28 amino acids or derivatives and 25 acyl carnitine derivatives (**Supplementary Appendix 1**).

The data were compared using Student's *t/t'* test, Mann-Whitney test, Chi-square, or Fischer exact-probability test as appropriate. First, we compared the concentrations of metabolites in the PE group and control group with metabolites having significant differences between groups being selected for further analysis. Second, we compared the concentrations of the foregoing metabolites in women with severe PE and non-severe PE and compared the concentrations of the metabolites with significant differences in non-severe PE women who developed maternal complications or adverse infant outcomes with those of women who did not develop any adverse outcomes. For metabolites with significant differences in the second analyses, we speculated that the levels of these metabolites might be associated with the severity of PE and would be potential biomarkers for prediction of maternal and perinatal outcomes in women with non-severe PE. Third, the metabolites were inputted into logistic regression models. Receiver operating characteristic (ROC) curves were constructed to assess sensitivity, specificity, and respective AUC with a 95% CI, thus estimating the feasibility of using single significant metabolites in predicting pregnancy outcomes in women with non-severe PE. A *p* value less than 0.05 was considered significant. Statistical analyses were carried out by SPSS version 25.0 (IBM, Armonk, NY, USA).

### 3. Results

The demographics of patients in both groups are shown in Table 1. Age and gestational age were not different between the groups. Patients in PE groups had a higher body mass index than the controls, but the variable of gestational weight gain was not different between the groups. Women with PE had significantly higher Cr, Mg, Tyr, Aba, C0, C2, C5:1, C18:1OH, C8/C10 and C16OH/C16 in the

**Table 1. Characteristics of women who developed preeclampsia and controls.**

	Preeclampsia (n = 49)	Controls (n = 32)	<i>p</i>
Age, year	30.0 ± 4.8	28.8 ± 2.1	0.43
Pre-pregnancy body mass index, kg/m <sup>2</sup>	23.9 ± 4.6	20.2 ± 2.0	<0.01
Gestational age, weeks			
<34	26 (53.1)	17 (53.1)	0.73
34–37	14 (28.6)	11 (34.4)	
≥37	9 (18.4)	4 (12.5)	
Gestational weight gain, kg	14.0 ± 6.4	14.3 ± 3.2	0.83
Number of live fetuses			
1	43 (87.8)	30 (93.8)	0.47
2	6 (12.2)	2 (6.3)	
Parity			
0	37 (75.5)	30 (93.8)	0.03
1	12 (24.5)	2 (6.2)	

Data are n (%), mean (SD).

blood compared to control patients (Fig. 1). Women with PE had significantly lower Ca, Zn, Aspa, C10, C10/C3, C12/C3, C18/C3, C3/C0, C8/C2, C16/C2 and (C16 + C18:1)/C2 in the blood compared to control mothers. Because some women with PE had received magnesium sulphate before enrollment, Mg and Ca were excluded from further analysis [10].

Forty nine patients were stratified by severity of PE with 26 of them being classified as severe PE. Except for blood pressure and proteinuria, no significant differences could be found in other variables between women with different PE severity (Table 2). Compared to mothers with non-severe PE, women with severe PE had significantly higher levels of C2, C18:1OH and C16OH/C16 in the blood, but significantly lower ratio of (C16 + C18:1)/C2 (Fig. 2).

In 23 patients with non-severe PE, neither placental abruption, stillbirth or neonatal death before hospital discharge was reported. Blood pressure exceeds the limits established in five patients of whom four received intravenous antihypertensive medication. Seven patients progressed to severe PE and 10 babies were admitted to intensive care unit. One case of an Apgar score <7 at 5 min was reported and two babies required respiratory support.

In patients with non-severe PE, the concentrations of C2, C18:1OH and (C16 + C18:1)/C2 were compared between women who developed maternal complications or adverse infant outcomes and those who did not. (C16 + C18:1)/C2 was found to be lower in women who developed maternal complications (*p* = 0.07) or adverse infant outcomes (*p* < 0.01) compared with those who did not in the non-severe PE group (Fig. 3). ROC curves for prediction of pregnancy outcomes in women with non-severe PE are shown in Fig. 4. (C16 + C18:1)/C2 at enrollment gave moderate prediction rates for maternal outcomes (AUC 0.746, 95% CI 0.543, 0.948) and perinatal outcomes (AUC 0.871, 95% CI 0.729, 1.000).

## 4. Discussion

Our hypothesis was that increased or decreased concentration of some metabolites may play a role in the aggravation of PE and concentrations of these metabolites may have changed prior to the aggravation of symptoms in women with PE. In our study, we found PE was associated with abnormal concentrations of some microelements, amino acids and acyl carnitines. Concentrations of four metabolites were associated with the severity of PE and (C16 + C18:1)/C2 seemed to be a potential biomarker in the prediction of pregnancy outcomes in non-severe PE patients.

This study showed a significant decrease in the serum Zn concentration of PE patients compared to controls as has been observed in previous publications [11–15]. Açıkgoz *et al.* [13] reported a negative correlation between angiotensin converting enzyme activity and Zn concentration and demonstrated that Zn deficiency in the placenta could lead to superoxide dismutase insufficiency resulting in an oxidative stress which may play a role in the pathophysiological processes of PE. We also found higher Cu and lower Se concentrations in our PE group, though neither reached statistical significance as demonstrated in previous publications [15–18].

Our study found lower levels of Aspa in PE patients compared to the control group, which was compatible with the result of a previous study [19]. Though the correlation between lower level of Aspa and PE development remains unclear, our results suggest Aspa deficiency may be a risk factor during the aggravation of PE. We also observed significant higher Tyr levels in PE patients with the results being consistent with those of a recent study [20]. We speculate that higher Tyr levels may be associated with the production of soluble fms-like tyrosine kinase 1, a potent antiangiogenic factor known to contribute to the maternal syndrome [21].

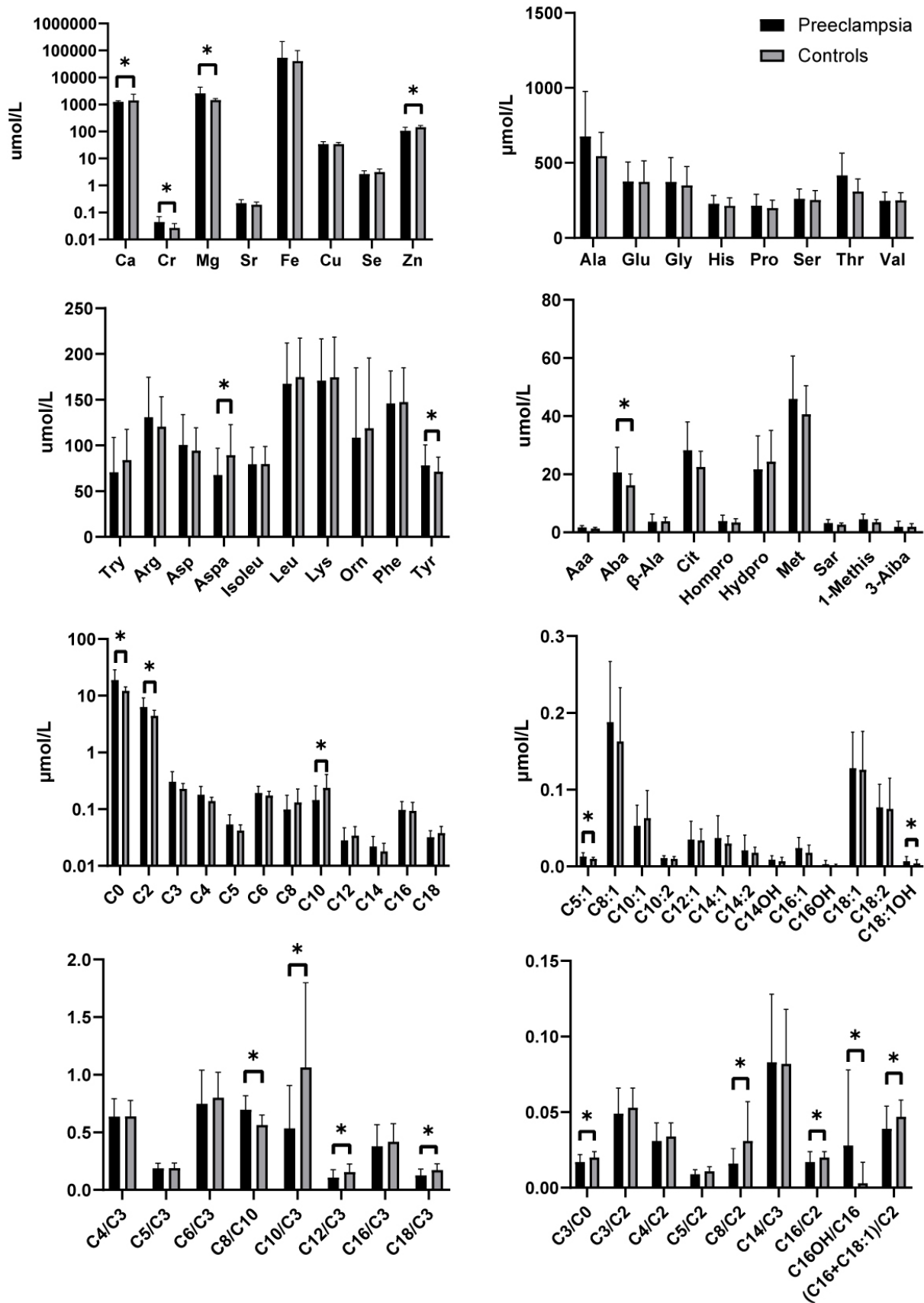
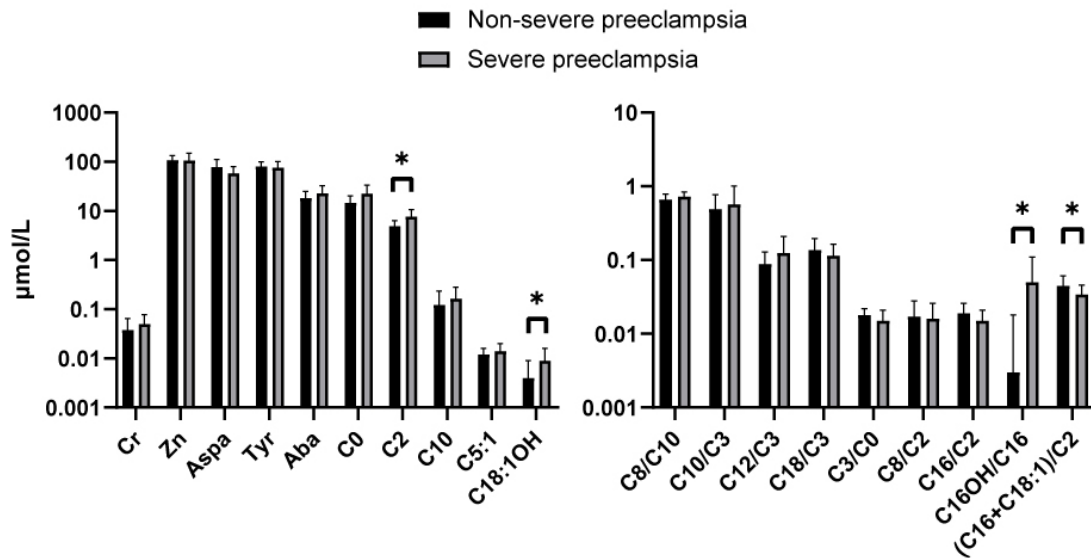


Fig. 1. The levels of microelement, amino acids and acylcarnitine in women who developed preeclampsia and controls (\* $p < 0.01$ ).

**Table 2. Characteristics of women who developed preeclampsia.**

	Non-severe (n = 23)	Severe (n = 26)	<i>p</i>
Age, year	30.0 ± 5.5	30.0 ± 4.1	0.98
Pre-pregnancy body mass index, kg/m <sup>2</sup>	24.9 ± 4.4	22.9 ± 4.6	0.13
Gestational age, weeks			
<34	10 (43.5)	16 (61.5)	0.37
34–37	7 (30.4)	7 (26.9)	
≥37	6 (26.1)	3 (11.5)	
Gestational weight gain, kg	14.1 ± 6.2	14.0 ± 6.7	0.93
Number of live fetuses			
1	20 (87.0)	23 (88.5)	0.87
2	3 (13.0)	3 (11.5)	
Parity			
0	18 (78.3)	19 (73.1)	0.67
1	5 (21.7)	7 (26.9)	
Interval from last pregnancy, year			
<5	1 (20.0)	1 (14.3)	1.00
5–10	3 (60.0)	5 (71.4)	
≥10	1 (20.0)	1 (14.3)	
History of preeclampsia			
No	20 (87.0)	25 (96.2)	0.33
Yes	3 (13.0)	1 (3.8)	
Chronic hypertension			
No	21 (91.3)	25 (96.2)	0.59
Yes	2 (8.7)	1 (3.8)	
Gestational diabetes			
No	17 (73.9)	22 (84.6)	0.48
Yes	6 (26.1)	4 (15.4)	
Highest systolic blood pressure, mmHg	145.7 ± 10.9	160.6 ± 20.3	<0.01
Mean systolic blood pressure, mmHg	138.5 ± 10.4	153.4 ± 19.2	<0.01
Highest diastolic blood pressure, mmHg	94.0 ± 8.7	104.7 ± 13.0	<0.01
Mean diastolic blood pressure, mmHg	88.3 ± 8.8	99.9 ± 13.8	<0.01
Protein per 24 hour urine collection, mg	1126.8 ± 1442.6	4065.1 ± 3266.9	<0.01

Data are n (%), mean (SD).



**Fig. 2.** The levels of microelement, amino acids and acylcarnitine in patients stratified by severity of preeclampsia (\**p* < 0.01).

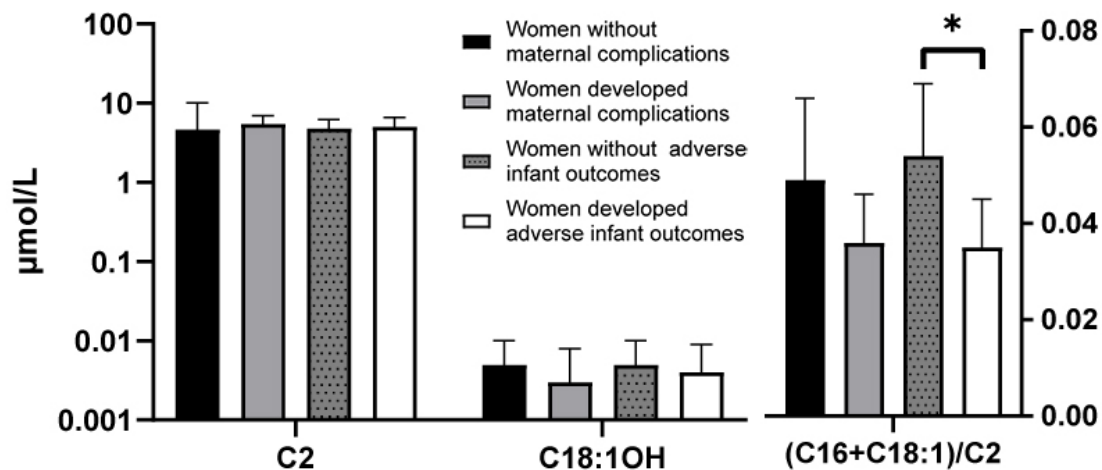


Fig. 3. The levels of acyl carnitine in women who developed maternal complications or adverse infant outcomes compared with those who did not in patients with non-severe preeclampsia ( $*p < 0.01$ ).

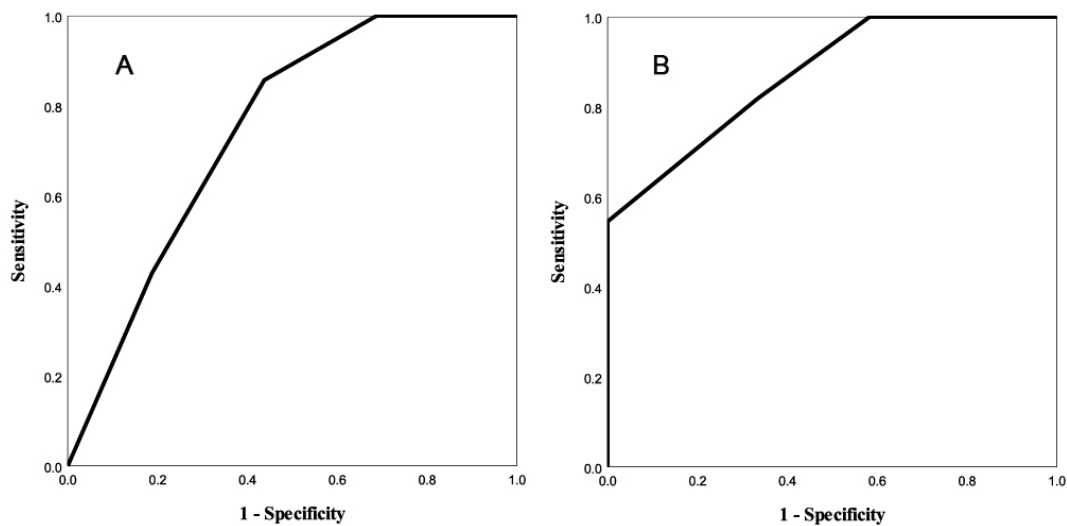


Fig. 4. ROC curves for diagnostic accuracy of (C16 + C18:1)/C2 ratio for the outcomes. (A) Prediction of maternal complications. (B) Prediction of adverse infant outcomes.

PE is related to lipid metabolism disorders, including fatty acid oxidation metabolism [22]. Metabolic abnormality of fatty acid in the placenta has been proved to release toxic metabolites which cause damage to vascular endothelium [23]. In pregnancy complicated by PE, increase of  $\beta$ -oxidation resulted from abnormal metabolism of triglycerides and fatty acid, as well as increased concentrations of pro-fibrotic factors such as interleukin 6 and tumor necrosis factor  $\alpha$  can lead to cardiac fibrosis [24–29]. To attenuate the effect of elevated vascular resistance and diminished volume caused by myocardial fibrosis, heart remodeling with myocyte hypertrophy has been found in these women [30,31]. Carnitine is an intermediate product of fatty acid and organic acid metabolism. Long-chain acyl carnitines have been found to be able to change cardiac electrophysiological and arrhythmia susceptibility, as well as myocardial contractility, which play a role in the ventricular remodeling

process [32,33]. Supplementation of levo-carnitine has been demonstrated to decrease diastolic blood pressure and improve embryo quality and pregnancy rates in animal and human studies, which may be a result from decrease of mitochondrial function and reduction of reactive oxygen species [34–37].

Previous studies have investigated the predictive values of acyl carnitines for PE in different trimesters of pregnancy [38,39]. Koster *et al.* [40] analyzed 24 metabolites in maternal serum in early pregnancies between patients with PE and controls, Twelve acyl carnitines were significantly different in early-onset PE patients, with effect levels ranging from an 18% decrease to a 29% increase. Liu *et al.* [20] analyzed 49 types of amino acids or acyl carnitines in maternal blood and compared the levels between women with PE and healthy pregnancies with the majority of them being significantly higher in pregnancies with PE. Previous stud-



ies as well as the current study report different metabolomic biomarkers for PE, which may partially be resulted from the differences in the sample material used, disease stage and metabolomics protocol and analysis utilized in the studies.

We believe that this is the first study to investigate (C16 + C18:1)/C2 in the prediction of pregnancy outcomes in non-severe PE patients. Though the underlying mechanism is still unknown, abnormal (C16 + C18:1)/C2 ratio seem to affect the activity of the heart and muscle carnitine palmitoyl transferase 2, which incapacitates the acyl-carnitine-mediated mitochondrial oxidation of long-chain fatty acids, causing severe cardiac hypertrophic remodeling, dilation, and heart failure [41].

Our study has some limitations. First, we collected samples from pregnant women from 28 weeks to full term and gestational age was comparable between the groups. However, as stated in previous articles, levels of the metabolites swing across the gestational age spectrum, which might have affected our results [42–46]. Second, we did not control for fasting or recent consumption of fatty foods or other dietary variables when collecting blood samples. It is suggested that these confounding factors may influence the levels of the metabolites, thus reducing the credibility of the results [47–49]. Third, the number of patients included was small and some outcomes could not be calculated. Concerning the foregoing limitations, it is uncertain whether (C16 + C18:1)/C2 ratio could be used as a biomarker to predict adverse events in non-severe PE patients. Future studies are required to explain the underlying molecular mechanism between (C16 + C18:1)/C2 ratio and PE.

## 5. Conclusions

Maternal levels of microelements, amino acids and acyl carnitines were associated with PE. (C16 + C18:1)/C2 seemed to be a potential biomarker in the prediction of maternal complications and adverse infant outcomes in non-severe PE patients. Further studies are needed to validate its potential usefulness.

## Author Contributions

MZ, HLW and YC designed the research study. MZ and LMY performed the research. CHW and YC provided help and advice on the experiments. HLW and TFL analyzed the data. MZ, HLW and YC wrote the manuscript. All authors contributed to editorial changes in the manuscript. All authors read and approved the final manuscript.

## Ethics Approval and Consent to Participate

This study was approved by the medical ethics committee of Hangzhou Women's Hospital (No. 2018-007-01). All participants in this study had provided written informed consent.

## Acknowledgment

Thanks to all the peer reviewers for their opinions and suggestions.

## Funding

The report was supported by Zhejiang basic public welfare research project (LGF19H040007 to Yun Chai).

## Conflict of Interest

The authors declare no conflict of interest.

## Supplementary Material

Supplementary material associated with this article can be found, in the online version, at <https://doi.org/10.31083/j.ceog4905121>.

## References

- [1] American College of Obstetricians and Gynecologists. Gestational hypertension and preeclampsia: ACOG Practice Bulletin, No. 222. *Obstetrics and gynecology*. 2020; 135: e237–260.
- [2] Macedo TCC, Montagna E, Trevisan CM, Zaia V, de Oliveira R, Barbosa CP, *et al*. Prevalence of preeclampsia and eclampsia in adolescent pregnancy: a systematic review and meta-analysis of 291,247 adolescents worldwide since 1969. *European Journal of Obstetrics & Gynecology and Reproductive Biology*. 2020; 248: 177–186.
- [3] Say L, Chou D, Gemmill A, Tunçalp Ö, Moller AB, Daniels J, *et al*. Global causes of maternal death: a who systematic analysis. *The Lancet Global Health*. 2014; 2: e323–e333.
- [4] Mol BWJ, Roberts CT, Thangaratinam S, Magee LA, de Groot CJM, Hofmeyr GJ. Pre-eclampsia. *Lancet*. 2016; 387: 999–1011.
- [5] Espinoza J. Recent biomarkers for the identification of patients at risk for preeclampsia: the role of uteroplacental ischemia. *Expert Opinion on Medical Diagnostics*. 2012; 6: 121–130.
- [6] Ganzevoort W, Rep A, de Vries JIP, Bonsel GJ, Wolf H. Prediction of maternal complications and adverse infant outcome at admission for temporizing management of early-onset severe hypertensive disorders of pregnancy. *American Journal of Obstetrics and Gynecology*. 2006; 195: 495–503.
- [7] Ukah UV, Payne B, Hutcheon JA, Ansermino JM, Ganzevoort W, Thangaratinam S, *et al*. Assessment of the fullPIERS Risk Prediction Model in Women with Early-Onset Preeclampsia. *Hypertension*. 2018; 71: 659–665.
- [8] Chaemsaithong P, Romero R, Tarca AL, Korzeniewski SJ, Schwartz AG, Miranda J, *et al*. Maternal plasma fetuin-a concentration is lower in patients who subsequently developed preterm preeclampsia than in uncomplicated pregnancy: a longitudinal study. *The Journal of Maternal-Fetal & Neonatal Medicine*. 2015; 28: 1260–1269.
- [9] Xie X, G WL, Lin ZQ, Di W, Ma D, Kong BH. *Obstetrics and Gynaecology*. 8th edition. People's Medical Publishing House: Beijing. 2013.
- [10] Rudnicki M, Junge J, Frølich A, ØRnvald K, Fischer-Rasmussen W. Magnesium supplement in pregnancy-induced hypertension. *Acta Pathologica, Microbiologica, et Immunologica Scandinavica*. 1990; 98: 1123–1127.
- [11] Al-Rubaye FG. Trace elements homeostasis in preeclampsia. *The Iraqi Journal of Medical Sciences*. 2009; 7: 116–123.
- [12] Mahomed K, Williams MA, Woelk GB, Mudzamiri S, Madzime S, King IB, *et al*. Leukocyte selenium, zinc and copper con-

- centrations in preeclampsia and normotensive pregnant women. *Biological Trace Element Research*. 2004; 75: 107–118.
- [13] Açıkoğuz S, Harma M, Harma M, Mungan G, Can M, Demirtas S. Comparison of angiotensin-converting enzyme, malonaldehyde, zinc, and copper levels in preeclampsia. *Biological Trace Element Research*. 2006; 113: 1–8.
- [14] Kumru S, Aydın S, Simsek M, Sahin K, Yaman M, Ay G. Comparison of serum copper, zinc, calcium, and magnesium levels in preeclamptic and healthy pregnant women. *Biological Trace Element Research*. 2003; 94: 105–112.
- [15] Atamer Y, Koçyigit Y, Yokus B, Atamer A, Erden AC. Lipid peroxidation, antioxidant defense, status of trace metals and leptin levels in preeclampsia. *European Journal of Obstetrics, Gynecology, and Reproductive Biology*. 2005; 119: 60–66.
- [16] Rayman MP, Bode P, Redman CWG. Low selenium status is associated with the occurrence of the pregnancy disease preeclampsia in women from the United Kingdom. *American Journal of Obstetrics and Gynecology*. 2003; 189: 1343–1349.
- [17] Mistry HD, Wilson V, Ramsay MM, Symonds ME, Pipkin FB. Reduced Selenium Concentrations and Glutathione Peroxidase Activity in Preeclamptic Pregnancies. *Hypertension*. 2008; 52: 881–888.
- [18] Katz O, Paz-Tal O, Lazer T, Aricha-Tamir B, Mazor M, Wiznitzer A, *et al*. Severe pre-eclampsia is associated with abnormal trace elements concentrations in maternal and fetal blood. *Journal of Maternal-Fetal and Neonatal Medicine*. 2012; 25: 1127–1130.
- [19] Kuc S, Koster MP, Pennings JL, Hankemeier T, Berger R, Harms AC, *et al*. Metabolomics profiling for identification of novel potential markers in early prediction of preeclampsia. *PLoS ONE*. 2014; 9: e98540.
- [20] Liu G, Deng W, Cui W, Xie Q, Zhao G, Wu X, *et al*. Analysis of amino acid and acyl carnitine profiles in maternal and fetal serum from preeclampsia patients. *The Journal of Maternal-Fetal & Neonatal Medicine*. 2020; 33: 2743–2750.
- [21] Rana S, Lemoine E, Granger JP, Karumanchi SA. Preeclampsia: Pathophysiology, Challenges, and Perspectives. *Circulation Research*. 2019; 124: 1094–1112.
- [22] Sattar N, Gaw A, Packard CJ, Greer IA. Potential pathogenic roles of aberrant lipoprotein and fatty acid metabolism in preeclampsia. *British Journal of Obstetrics and Gynaecology*. 1996; 103: 614–620.
- [23] Thiele IGI, Niezen-Koning KE, van Gennip AH, Aarnoudse JG. Increased plasma carnitine concentrations in preeclampsia. *Obstetrics and Gynecology*. 2004; 103: 876–880.
- [24] Siddiqui I. Maternal Serum Lipids in Women with Preeclampsia. *Annals of Medical and Health Sciences Research*. 2014; 4: 638–641.
- [25] Lei Q, Lv LJ, Zhang BY, Wen JY, Liu GC, Lin XH, *et al*. Antepartum and post-partum markers of metabolic syndrome in preeclampsia. *Journal of Human Hypertension*. 2011; 25: 11–17.
- [26] Guzzardi MA, Iozzo P. Fatty heart, cardiac damage, and inflammation. *The Review of Diabetic Studies*. 2011; 8: 403–417.
- [27] Iozzo P. Myocardial, perivascular, and epicardial fat. *Diabetes Care*. 2011; 34: S371–S379.
- [28] Stepan H, Kley K, Hindricks J, Kralisch S, Jank A, Schaarschmidt W, *et al*. Serum levels of the adipokine fibroblast growth factor-21 are increased in preeclampsia. *Cytokine*. 2014; 62: 322–326.
- [29] Tosun M, Celik H, Avci B, Yavuz E, Alper T, Malatyalioglu E. Maternal and umbilical serum levels of interleukin-6, interleukin-8, and tumor necrosis factor-alpha in normal pregnancies and in pregnancies complicated by preeclampsia. *The Journal of Maternal-Fetal & Neonatal Medicine*. 2010; 23: 880–886.
- [30] Lang RM, Pridjian G, Feldman T, Neumann A, Lindheimer M, Borow KM. Left ventricular mechanics in preeclampsia. *American Heart Journal*. 1991; 121: 1768–1775.
- [31] Kehat I, Molkenstein JD. Molecular pathways underlying cardiac remodeling during pathophysiological stimulation. *Circulation*. 2010; 122: 2727–2735.
- [32] Aitken-Buck HM, Krause J, Zeller T, Jones PP, Lamberts RR. Long-Chain Acylcarnitines and Cardiac Excitation-Contraction Coupling: Links to Arrhythmias. *Frontiers in Physiology*. 2020; 11: 577856.
- [33] Aitken-Buck HM, Krause J, van Hout I, Davis PJ, Bunton RW, Parry DJ, *et al*. Long-chain acylcarnitine 18:1 acutely increases human atrial myocardial contractility and arrhythmia susceptibility. *American Journal of Physiology-Heart and Circulatory Physiology*. 2021; 321: H162–H174.
- [34] Askarpour M, Hadi A, Dehghani Kari Bozorg A, Sadeghi O, Sheikhi A, Kazemi M, *et al*. Effects of L-carnitine supplementation on blood pressure: a systematic review and meta-analysis of randomized controlled trials. *Journal of Human Hypertension*. 2019; 33: 725–734.
- [35] Kim MK, Park JK, Paek SK, Kim JW, Kwak IP, Lee HJ, *et al*. Effects and pregnancy outcomes of L-carnitine supplementation in culture media for human embryo development from in vitro fertilization. *The Journal of Obstetrics and Gynaecology Research*. 2018; 44: 2059–2066.
- [36] Morimoto N, Hashimoto S, Yamanaka M, Satoh M, Nakaoka Y, Fukui A, *et al*. Treatment with Laevo (L)-carnitine reverses the mitochondrial function of human embryos. *Journal of Assisted Reproduction and Genetics*. 2021; 38: 1601.
- [37] Carrillo-González DF, Maldonado-Estrada JG. L-carnitine supplementation in culture media improves the pregnancy rate of in vitro produced embryos with sexed semen from *Bos taurus indicus* cows. *Tropical Animal Health and Production*. 2020; 52: 2559–2565.
- [38] Odibo AO, Goetzinger KR, Odibo L, Cahill AG, Macones GA, Nelson DM, *et al*. First-trimester prediction of preeclampsia using metabolomic biomarkers: a discovery phase study. *Prenatal Diagnosis*. 2011; 31: 990–994.
- [39] Kenny LC, Broadhurst DI, Dunn W, Brown M, North RA, McCowan L, *et al*. Robust early pregnancy prediction of later preeclampsia using metabolomic biomarkers. *Hypertension*. 2010; 56: 741–749.
- [40] Koster MPH, Vreeken RJ, Harms AC, Dane AD, Kuc S, Schielen PCJI, *et al*. First-Trimester Serum Acylcarnitine Levels to Predict Preeclampsia: a Metabolomics Approach. *Disease Markers*. 2015; 2015: 857108.
- [41] Pereyra AS, Hasek LY, Harris KL, Berman AG, Damen FW, Goergen CJ, *et al*. Loss of cardiac carnitine palmitoyltransferase 2 results in rapamycin-resistant, acetylation-independent hypertrophy. *The Journal of Biological Chemistry*. 2017; 292: 18443–18456.
- [42] Mousa A, Naqash A, Lim S. Macronutrient and Micronutrient Intake during Pregnancy: an Overview of Recent Evidence. *Nutrients*. 2019; 11: 443.
- [43] Schoengold DM, deFiore RH, Parlett RC. Free amino acids in plasma throughout pregnancy. *American Journal of Obstetrics and Gynecology*. 1978; 131: 490–499.
- [44] Hernández-Andrade E, Gerulewicz D, Villanueva-Díaz C, Sotelo A, Ahued-Ahued JR. Concentración de aminoácidos libres en líquido amniótico y en plasma materno en diferentes etapas del embarazo. *The Revista de Investigación Clínica*. 2004; 56: 756–762. (In Spanish)
- [45] Talián GC, Komlósi K, Decsi T, Koletzko B, Melegh B. Determination of carnitine ester patterns during the second half of pregnancy, at delivery, and in neonatal cord blood by tandem mass spectrometry: complex and dynamic involvement of carnitine in the intermediary metabolism. *Pediatric Research*. 2007;



62: 88–92.

- [46] Lindsay KL, Hellmuth C, Uhl O, Buss C, Wadhwa PD, Koletzko B, *et al.* Longitudinal Metabolomic Profiling of Amino Acids and Lipids across Healthy Pregnancy. *PLoS ONE*. 2016; 10: e0145794.
- [47] Felig P, Kim YJ, Lynch V, Hendler R. Amino acid metabolism during starvation in human pregnancy. *The Journal of Clinical Investigation*. 1972; 51: 1195–1202.
- [48] Metzler-Zebeli BU, Lang IS, Görs S, Brüssow K, Hennig U, Nürnberg G, *et al.* High-protein-low-carbohydrate diet during pregnancy alters maternal plasma amino acid concentration and placental amino acid extraction but not fetal plasma amino acids in pigs. *The British Journal of Nutrition*. 2013; 108: 2176–2189.
- [49] Bouchard-Mercier A, Rudkowska I, Lemieux S, Couture P, Vohl MC. The metabolic signature associated with the Western dietary pattern: a cross-sectional study. *Nutrition Journal*. 2013; 12: 158.